



SMART AIRPORT
INNOVATIONS
2019-2020



123RF/Olegudko

INNOVATIONS abound in our sector..

Seamless, interconnected, tailor-made, efficient, INTELLIGENT, today's airport is avant-garde making every effort to satisfy the requirements of its passengers, companies and partners.

In this directory, Proavia features the latest French innovations in the field of airport terminals, handling and air traffic control. PROAVIA is the professional association that promotes the know-how and technology of French companies in the field of equipment and services for airports and air traffic control.

A nonprofit professional association, PROAVIA consists of **60 member companies** and carries out its activities of promotion and information under the auspices of the General Directorate of Civil Aviation.

Yes, but which French companies offer the latest technological solutions?



INDEX



AIRSIDE

- ALPHA-CIM
- ALTYS
- AUGIER
- AUTOMATIQUE & INDUSTRIE
- CS GROUP
- DEGREANE HORIZON
- ENGIE INEO
- GORGY TIMING
- SAFETY LINE
- SCPTIME



LANDSIDE

- ACOREL
- ALFYMA
- ALPHA-AIRPORT
- ALSTEF
- AUTOMATIQUE & INDUSTRIE
- CODRA
- DAIFUKU LOGAN
- EASIER
- IDEMIA
- LOGYX
- MATREX AIRPORT
- ORBILITY
- RESA
- SCPTIME
- SMITHS DETECTION
- VISIOM

- Automatic Passenger Counting Systems
- Queue Management Solutions
- LIDAR

COMPANY

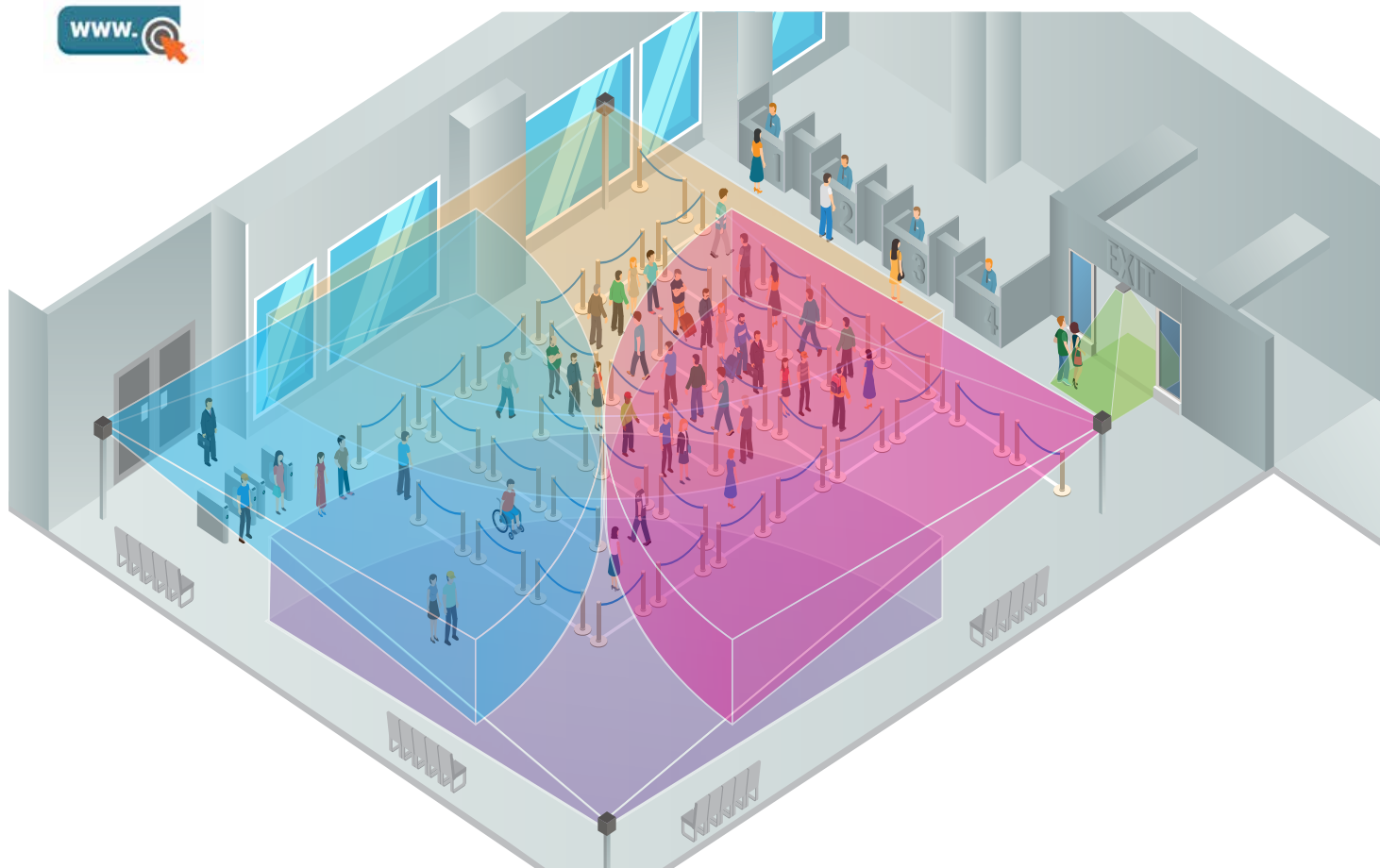
ACOREL is specialized in automatic people counting solution since 1989.

We are present in many sectors, including public transports (buses, trams, trains, metros), shopping centers and retail stores, as well as airports.



LATEST INNOVATION

ACOREL proposes advanced solutions for automatic passenger counting and queue management in airport terminals. Based on high technology sensors based on **LIDAR** (IR scanning laser) and 3D stereoscopic cameras, our solutions reach over 98% accuracy, resulting in the exact accounts number of people queuing as well as more accurate calculation of waiting times. Our solutions can cover wide areas (30-50 m² per sensor) and adapt to terminal configurations (e.g., low ceilings) not possible with other products in the market.



- Automatic Tray Return System (TRS)
- Speeding passenger flow



COMPANY

ALFYMA company is specialized in conveyor and handling systems for different activities (airports, agro-food, recycling, quarries, logistics...).

ALFYMA is present in airport activity with security checkpoint systems (TRS line and all the different checkpoint equipments) and with BHS, Baggage Handling Systems (X-Ray machine integration according to 3 safety standards).



LATEST INNOVATION

Our latest innovation is our automated Security Checkpoints system. We can supply a complete **Tray Return System (TRS)**, including a re-check area for handling faulty trays.

This system permits automated management of self-service trays at various preparation stations along the processing stream, according to airport requirements and to the space available. Passengers are offered several trays at each preparation post, limiting the number of actions of required of passengers and thereby speeding passenger flows.

Many automated lines are already in use or soon to be installed in various airports (Nantes, Toulouse, Lisbonne, Bâle-Mulhouse, Paris Airports...).

- **Airport Systems Integrator**

COMPANY

ALPHA-AIRPORT has been providing for more than 25 years a wide range of airport systems in both Airside (Airfield Lighting, ...) and Landside (terminal) activities. The company is able to provide complete turnkey projects including design, procurement, installation, commissioning and training.

LATEST INNOVATION

The main innovation of ALPHA-AIRPORT is the design and built of **modular terminals** using the last generation of specific equipment. The structures are then adapted with the passenger traffic of regional airports. The interest of this type of Terminal is the possibility to adjust the dimensions with the increasing traffic, the lead-time of 12-15 months and the limited budget of each project. The ROI is then improved because of the adapted sizing and the fast commissioning.

AIRPORT APPLICATION

The **modular Terminal** design made by ALPHA-AIRPORT has been completed by a relevant energy consumption study. The limitation of air conditioning to major areas, the development of natural airflow of the other areas and the roof completely covered by solar panels have limited the fossil energy consumption to a minimum. Finally the innovation has been to allow regional airports to match the international standard with a limited budget.





- Intelligent lighting • Speed • Modular
- Open systems

COMPANY

Integrator of new technologies enhancing airport automation in the following areas:

PEXAS, UAE, airfield lighting, GTC, baggage handling, passenger flow management, jetway operations.

LATEST INNOVATION

Our latest «**ISAC**» system controls taxiway and runway lighting by fiber optics. The intelligence of the system is distributed throughout the field to guarantee response times of less than the second.

The system is adaptable to existing or new platforms and is compatible with all standard protocols, and extends to new technologies (video, radar, weather network, ILS, VOR DME, IoT, etc.). The ability to integrate with many information sources results in a more powerful lighting capability.





- Baggage handling systems



COMPANY

French company Alstef (B2A Technology group), is one of the major global suppliers of hold-baggage handling systems in the world and designs innovative and sustainable solutions for airports.

LATEST INNOVATION

BAGXone is the first high speed AGV for airport. Intended for unitary transportation of baggage, in order to associate flexibility and performance with a limited infrastructure.

AIRPORT APPLICATION

BAGXone is able to travel great distances in a short time thanks to its speed up to 7,5 m/s (inter-terminals connection for example). It is also suitable for the connection between different functional areas of a baggage sorter (screening machines, storage...).



- Traffic Surveillance • Digital Communications
- Airport Operations • Air Traffic Control

COMPANY

ALTYS Technologies is a supplier of advanced technologies and solutions for the Air Traffic Control and Airport industry including:

- Traffic surveillance sensors
- Collaborative Decision Making
- Surface management
- Apron control
- Turnaround management
- RF & network communications

LATEST INNOVATION

ENVISION represents the latest innovation in traffic monitoring solutions:

- Tracking of all mobiles in all visibility conditions
- Suitable for any size of airport
- Hybrid sensor infrastructure: ADS-B, video, LIDAR, mmWave radar
- Powerful Artificial Intelligence engine
- Plug-and-play with SAGA and standard radar displays

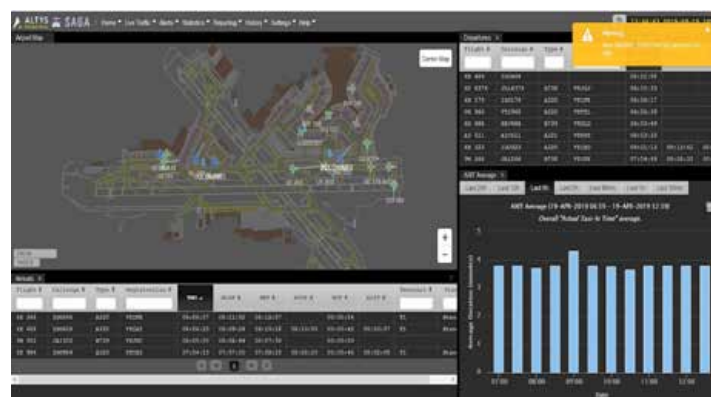
The concept was developed by ALTYS and Civil Aviation School ENAC with the support of EUROCONTROL in the framework of the SESAR 2020 Program.

AIRPORT APPLICATION

ENVISION improves safety by providing Airport Operations and ATC real-time control over all movements in the runway, taxiway and apron areas in all visibility conditions.

It additionally allows automated detection and sharing of operational milestones events (On/Off Block, Take-off, Landing) via an A-CDM interface enhancing predictability and cost-efficiency of operations.

ENVISION covers needs of both main international and secondary airports thanks to affordable and scalable sensor technologies.



Solutions to transport energy differently by reducing cable cross-sections and costs to power installations over distances ranging from 500 meters to 50 km

COMPANY

Located in the Eco-valley, the economic engine of the Nice Cote d'Azur Metropolis and only 10 minutes from Nice International Airport, AUGIER Energy is a major global specialist in the transportation and distribution of electrical energy at medium voltage for distances between 500 meters to 50 kilometres.

The design and manufacture of our products and systems are renowned for their innovation and reliability. At AUGIER Energy, our international clients find adapted and efficient solutions for all electrical supply projects.

LATEST INNOVATION

The innovation of the AUGIER Energy system-consists in the replacement of a current loop with a 950V feeder to keep a small section of LV cable to power the voltage receivers.

AUGIER Energy has manufactured 950V step-up cells with multiple contactors and waterproof transformers.

AIRPORT APPLICATION

Our solution makes it possible to power the guidance panels and WIG WAG from a 950V network, whatever the distance, while remaining in LV cable and avoiding the ground airfield lighting constraints due to the serial power supplies.

A step-up cell 4 feeders has replaced the function of 4 constant current regulators.

This installation was done at ADP - Orly runway N°3 - September 2019



• Cybersecurity • Industrial and urban systems • OIV

COMPANY

AI designs, develops and implements smart SCADA and automation turnkey solutions for infrastructure and industries. With more than 25 years of experience at airports, we are involved in the monitoring and control of airport facilities from the simplest to the most complex in the terminal, control towers and technical buildings.

With the recent acquisition of Euro system, our company represents more than 100 employees and 9 € million in sales.



A.I. consultant engineers, through an inter-disciplinary approach, can analyse the security risks to airport infrastructure and propose solutions to both prevent security breaches and mitigate damage to industrial systems. This approach represents an innovation.

LATEST INNOVATION

The complexity of airport systems makes it imperative to create sound cybersecurity measures to protect them.

However, A.I. have observed that there is today a gap between the excellent efforts of IT services to protect systems and data against cyber attacks and the protection required at “machine level” to ensure that the many electrical and mechanical systems of the airport remain resilient.

In addition to engineering, A.I. provides innovative solutions:

- Security centre, **all-in-one modular system** provides authentication servers, network segmentation, backup & recovery, log management, etc.
- Intrusion detection systems capture the behaviour of industrial systems through network activity, PLC programs and expert rules.





- Mobility • Connectivity • User expérience
- Mobiles App

COMPANY

Codra is a leading French SCADA company. For more than 30 years, we have worked hard on the technical and operational improvements of our software solutions to let our customers continuously improve their operational performance.

Codra's main business areas are in the Smart Buildings, Energy & Utility and Industry business sectors.

With a strong brand in the French market behind us, we are accelerating our development in the European market and beyond.

LATEST INNOVATION

In early September, Codra announced the release of its latest SCADA Platform version: **Panorama Suite 2017** which features several innovations. The most significant are:

- Enhanced cybersecurity functionality (both active and passive features).
- New protocols (LON & IEC-61850) supported for building management systems and for large electrical installations.
- Improved development tools for multilingual application design.

However, the most important innovation is **Panorama Mobile**. A mobile App available on iOS & Android fully integrated into the Panorama Platform solution.

This mobile solution is designed to share specific SCADA information directly from your **Panorama** SCADA application on smartphones and tablets. It will provide a new Panorama user experience for field operators and will significantly increase their productivity.



- Counter-UAV Systems • Voice Communication Systems
- ATC Training Simulators • Cybersecurity

COMPANY

CS Group is a key actor in design, integration and support of IT systems in various segments, including Air Traffic Control, Defence and area protection.

With more than 30 years in ATC and Defense solutions, and a strong involvement in the whole life cycle of systems (from design to the deployment and maintenance), CS Group supplies Information and communication solutions in ATC and airport centers.

For these centers, CS Group offer:

- Counter UAV systems, successfully deployed by french MOD and french Ministry of Interior for many various missions,
- Voice communication systems, in operation in french civil and military centers, NATO and Switzerland,
- ATC training simulators, in operation in french military ATC training center and on going integration of ATC training center for Paris controllers,
- Cybersecurity to harden the delivered systems against cyberattacks.



LATEST INNOVATION

BOREADES is CS' integrated system able to detect, identify, track and neutralize rogue drones as well as localize remote pilots. It has been designed to protect critical assets against small drones. This system perfectly answers to the current airports security needs. small drones.

BOREADES is a SMART solution that can be deployed on any airport:

- Scalable: can be upgraded to extend capabilities.
- Modular: configuration can be customised based on the need.
- Autonomous: can be configured to operate with limited human intervention.
- Rapidly deployable: can be used to protect events.
- Transportable: **BOREADES** is based on light units packed in transport cases.

BOREADES standard configuration includes a radar (3D or 2D), an optronic sensor for day/night video identification & tracking, and a jamming turret, all integrated with a real time command and control system built by CS. The choice of sensors and effectors can be determined with each customer to answer their specific needs.

AIRPORT APPLICATION

BOREADES is aiming to protect any critical area, including airports and ATC facilities and has therefore undertaken:

- implementation and coverage pre-studies for airports to manage area protection and surveillance of UAV.
- demonstrations of the **BOREADES** system for several authorities, in particular UAE civil aviation authorities.



- Ergonomics • Flexibility • Productivity
- Space reduction • Eco-friendly

COMPANY

Daifuku Airport Technologies understands a reliable and efficient baggage handling system is essential to an airport's success.

That's why more than 500 airports around the world depend on us to engineer, manufacture, install, integrate, service, operate and maintain the most durable baggage handling systems in the industry.

Daifuku Airport Technologies consists of BCS Group, Daifuku Logan, Elite Line Services, Jervis B Webb and Logan Teleflex.

LATEST INNOVATION

ATec solution for CBRAs (Checked Baggage Reconciliation Area) replaces traditional belt conveyors and static search tables with Mobile Inspection Tables (MIT).

Bags are automatically loaded onto a MIT and delivered to the search agent for inspection. Once the bag is searched, the MIT automatically delivers the bag back to the appropriate conveyor. It is designed to eliminate any need for the agent to lift or turn potentially heavy bags.

The benefits over traditional conveyor-based CBRAs include: improved ergonomics, flexibility, higher productivity, better use of space, and noise reduction.

Energy use is reduced by 68% compared with traditional conveyors. It uses technology from the firm's existing **SmartCard Automatec Guided Card** product to provide a relocatable work platform for airport's checked baggage resolution areas (CBRAs).

This system is mainly used in the United States but could soon be implemented in Europe.





- Flight safety • Wind shear • Wind profiler UHF RADAR

COMPANY

DEGREANE HORIZON is among the world leaders for meteorological observation system development: Automated Weather Observation Systems (AWOS), Wind profiler RADAR, networks of Automatic Weather Stations.

DEGREANE HORIZON is part of VINCI Group.

DEGREANE HORIZON developed for 30 years a wide range of products and services dedicated to meteorological observation.

LATEST INNOVATION

Horizontal wind shear detection for flight safety improvement.

During approach, landing and take-off phases, aircraft are very sensitive to disturbances induced by sudden and drastic change in wind speed and/or direction. In such situations, it can be difficult or impossible to maintain control of an aircraft and fatalities can occur.

To date, no equipment has been available to measure turbulence in the flight path under all weather conditions.

Based on clear air wind profiler RADAR measurement, Degreane Horizon has developed a technology able to detect horizontal wind shear. Specific antenna panels are oriented in the approach axis allowing wind shear detection up to 10 km. Field experiments now underway at Clermont-Ferrand airport, supported by Vinci Airport and Météo France, are validating this innovative solution which is without equivalent in the market.





- Self-service solutions • Airports • Immigration
- Transportation • Biometrics



COMPANY

EASIER is a merger between two world leaders in passenger solutions: IER and Automatic Systems. This alliance enabled EASIER to offer scalable solutions that optimize, and secure the passenger flows in field of the airports, public transportation, and immigration.

LATEST INNOVATION

An expanded range of solutions, and services dedicated to the passenger flows management in the field of transport, and immigration. The technologies cover peripherals such as ATC, BTP/BPP printers, the self-service solutions like the CUSS kiosks and baggage drop-off kiosks as well as the **eGates** with the possible addition of biometrics. The objective of EASIER is therefore to offer scalable solutions to optimize, and secure the passenger flows.

AIRPORT APPLICATION

A complete range of technologies that covers all touch points of the airports, and go from the check-in to the boarding including the immigration area. EASIER also provides the RFID technology, and the biometric solutions among its portfolio of solutions for an easy and secure access to the boarding gate as well as a unique passenger experience.

- ITWP • ATM • Airports • Decision-making

COMPANY

ENGIE Ineo is a major player in electrical engineering, energy efficiency, transportation systems, telecommunications and services.

With 40plus year-long experience and prestigious worldwide client references in more than 70 countries, ENGIE Ineo designs, deploys and maintains aeronautical systems and products in Towers, Control Centres and Airports.

LATEST INNOVATION

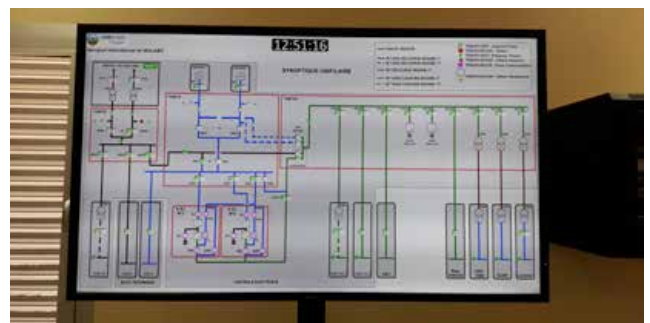
AIRtouch – a system of integrated work positions for Control Towers and Airports.

«Too much information destroys information!»

AIRtouch's role is to optimise the workspaces of Air Traffic Controllers. It gathers and distributes the most critical information about their environment, while supporting their decision-making.

Each user of the system can therefore focus on his tasks and at the same time benefit from direct access to the information pertaining to his responsibilities.

AIRtouch's ability to aggregate heterogeneous information and to comply with specific aeronautical constraints paves the way to a new way of managing air traffic. It encompasses anticipated management of events, active distribution of information and support for decision-making, as well as the improvement of cross-departmental services such as billing, statistics and aeronautical audits.





- Turnaround optimisation • Punctuality • CDM • SESAR



COMPANY

For more than 40 years, GORGY TIMING has designed, manufactured and marketed solutions for precision system timing and secured time broadcasting.

GORGY TIMING has supplied equipment to over 1000 airports worldwide. Our systems give accurate, reliable and secure time references to airport systems such as FIDS, PA, VDI networks, BIDS, access control, and video surveillance.

LATEST INNOVATION

In 2015, Gorgy Timing developed the **LEDI TIMER**, a LED display located at departure gates to give the same time information to all ground support personnel to synchronise their turnaround activities (cleaning, fuelling etc..). This product facilitates operational Collaborative Decision Making (CDM) as embodied in the SESAR programme. The punctuality of pushbacks has improved by up to 25% where the system is installed.





- Biometrics • E-boarding • Passenger processing • Stress-free travel



COMPANY

Idemia is a world leader in digital security & identification technologies with the ambition to empower citizens and consumers alike to interact, pay, connect, commute, travel and even vote in ways that are now possible in a connected world.

With close to 3bn in revenues and more than 14,000 employees, Idemia is the result of the merger between OT (Oberthur Technologies) and Safran Identity & Security (Morpho) completed in 31 May 2017.



LATEST INNOVATION

Passenger processing at airports is still 90% manually processed, generating bottlenecks, costs and undue stress for passengers.

To help reduce queues and waiting time, OT Morpho has implemented Digital Biometric Passenger Processing at Changi and Bangalore international airports.

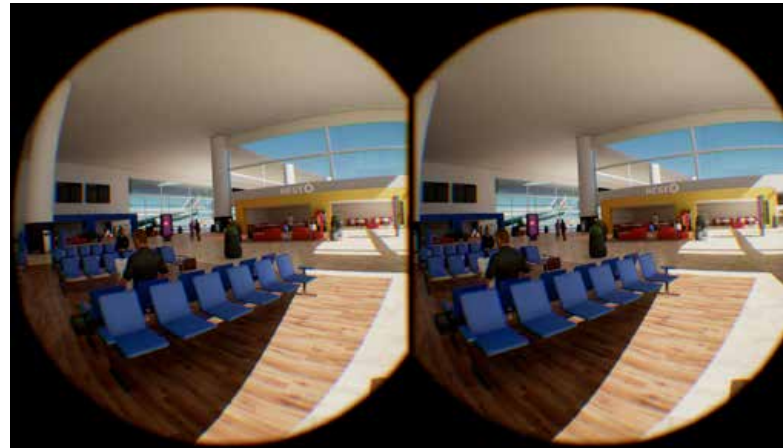
Through biometrics **MorphoPass** uses a «virtual token» enabling token-less, paperless and hassle-free passenger processing. This service speeds passengers through airport checkpoints. It is difficult to forge, exchange or destroy, and is ergonomic since it is based on the passengers themselves.

MorphoPass is built on Privacy by Design principles protecting private data and dissemination.





- Safety and security awareness training • Virtual reality
- 3D modelling of airport area • Anomaly and incident detection
- Training software



COMPANY

LOGYx is a private company founded in 2001, offering its up-to-date solutions in the field of airport security in collaboration with the French Civil Aviation Authority (DGAC) and the French Civil Aviation University (ENAC).

More than an IT company, LOGYx is committed to providing training solutions leading to the development of human expertise. Based on a «serious game» approach, LOGYx training platform is including new technologies such as 3D and Virtual Reality.

LATEST INNOVATION

How to better educate airport personnel on safety and security issues?

Security risks have now spread and cover the entire airport area, both on the airside and the city side. Today, more than yesterday, security is everyone's concern and training of personnel operating at the airport has now become crucial.

Thanks to **3D modelling** and the use of **virtual reality**, LOGYx offers airport managers a tailor-made security awareness solution, enabling their personnel to project themselves in their daily working environment. The virtual reproduction of their airport offers controllable and observable conditions, and allows training to better detect and, in fine, appropriately react to any anomaly or incident related to safety or security.

- By pass • Baggage reclaim • Carrousel • Flexibility • Easy



COMPANY

MATREX designs, manufactures and installs baggage-handling systems and passenger-processing solutions. Our systems, designed to last, meet latest international security regulations.

- Check-in banks and counters.
- Belt conveyors, collector/pacer conveyors.
- Manual/automatic sorting carousels.
- Pushers, diverters.
- Baggage reclaim carousels.
- Boarding or Police counters.
- Security search tables, benches, seats.
- Baggage screening machines for standard hand/hold baggage and security checkpoint.



LATEST INNOVATION

MATREX provides a smart solution to **connect two baggage reclaim carousels**.

Small international airports often face critical circumstance with arrivals of different size aircrafts, one after the other.

Luggage delivery then becomes a real headache for airport operators from 150-bags-small aircrafts up to 1000-bags-intercontinental flights.

Thanks to MATREX, operators can henceforth connect mechanically side-by-side baggage reclaim carousels.

- During day to day operation, both carousels are separated and deliver bags from flights independently.
- When a large carrier lands, the connection of both equipment offers an extended carousels' delivery effective length. Delivery will then be smoother and faster.

Easy to implement in existing airports, MATREX solution brings flexibility to Baggage delivery process. It is already operational in one African airport and shall be shortly available in several other locations.

- Parking revenue and access control system for airports



COMPANY

ORBILITY is the international leader in parking revenue and control systems for airports, renowned for the quality of its products and associated services. For over 50 years we have installed more than 15,000 of our systems worldwide and have dedicated teams.

LATEST INNOVATION

We offer a parking revenue and access control solution ready to interface with airport systems through the use of tickets containing PDF417 barcodes or QR codes, compatible with those defined by IATA for boarding passes. This offers passengers an easier access not only to the car parks but also to other airport services from the same medium (for example by using the boarding pass either printed on paper or displayed on a smartphone).

AIRPORT APPLICATION

Our solution facilitates the passenger process in airports through **the use of a single media (the boarding pass)** and paves the way to extended services such as couponing and integration with e-commerce platforms.





- Airport systems integrator • More than 1000 references worldwide

COMPANY

Since 1991, RESA Airport Data Systems has been developing and marketing IT systems worldwide to meet the operational needs of airport industry players (airports, airlines and handlers).

LATEST INNOVATION

Innovation is in the DNA of RESA products. In 2019, the new versions of our AODB and BRS meet the latest industry requirements as well as IATA and EUROCONTROL recommendations.

In terms of passenger traceability, RESA is innovating with its new automatic door, the **MAJOR e-Gate**, with its concentrated technology making it the most complete access control on the market. Compact but PRM compatible, suitable for security checkpoints, the **MAJOR e-Gate** is versatile and enhances the reliability of controls for passengers' uniqueness thanks to a unique design, integrated and intuitive biometrics, integrated FIDS, VIP priority access but also for automated boarding or immigration checkpoints.



AIRPORT APPLICATION

System integration is the major challenge facing airports in terms of airport IT. All RESA developments meet this requirement.

In this way, the **MAJOR e-Gate** combines the innovations of all systems with the perspective that One ID biometrics is used at all stages of the passenger flow.

At Montreal Trudeau Airport, the **MAJOR e-Gates** filter and direct domestic or international passengers to the appropriate areas.





- **Safety Management System** • **Risk Assessment**
- **Big Data** • **Airside Analytics** • **Emissions reporting**



COMPANY

Safety Line offers Big Data software solutions for the safety and efficiency of airline and airport operations with a focus on fuel and CO2 emissions reduction. The combination of a solid expertise in aviation associated with patented research in data science applied to air transport allow Safety Line to offer uniquely innovative solutions.

LATEST INNOVATION

- 1) **AirsideWatch** is a Business Intelligence platform driven by airports surface RADAR which provide precise insights into performance indicators.
- 2) **SafetyCube** is a unique risk management software that integrates every aspect of operational safety and compliance.

AIRPORT APPLICATION

AirsideWatch:

- Runway Condition Codes (RCC)
- Taxiing time and traffic informations
- Carbon footprint & noise pollution

SafetyCube:

- Airport specific risk taxonomy
- Dynamic BowTie risk analysis tool
- Safety KPIs and dashboards

- Service to broadcast time • Secure synchronisation • Legal time



COMPANY

SCPTime sets up an infrastructure and offers a service to broadcast the legal time of a country with a Secured Certified Precise and Traceable time signal.

SCPTime offers a global time synchronization service for the airports' networks and equipment.

LATEST INNOVATION

In the age of digital technology, of regulatory changes, of electronic signatures, of industry 4.0, of the Internet of Things, and with the importance of cybersecurity, time has become fundamental.

SCPTime time synchronization is the answer to the issues raised by the rapid digitalization of exchanges: cybersecurity and traceability become key words.

SCPTime time distribution is certified legal, secure, traceable and accurate according to your use.

AIRPORT APPLICATION

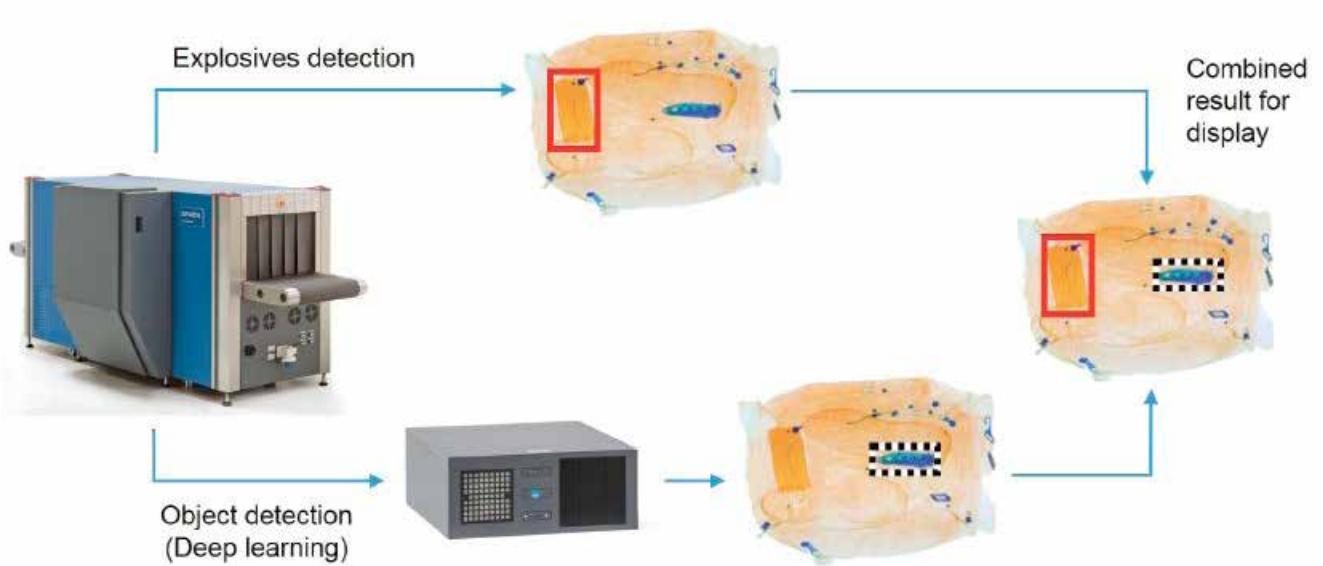
SCPTime guarantees the distribution of the legal time throughout the airport in a secure and traceable way as a certified service.

With the SCPTime service, the airport's time source and its dissemination to the airport networks are reliable and certified so that the synchronization of all applications of the airport computer network is guaranteed.

We provide the legal time of a country (UTC) as a service offering the airports the first time signal fully Secured Certified Precise and Traceable.



- Threat detection and screening technologies for aviation, ports and borders, urban security and the defence markets



COMPANY

With more than 40 years of field-tested experience, we deliver the solutions needed to protect society from the threat and illegal passage of explosives, prohibited weapons, contraband, toxic chemicals and narcotics.

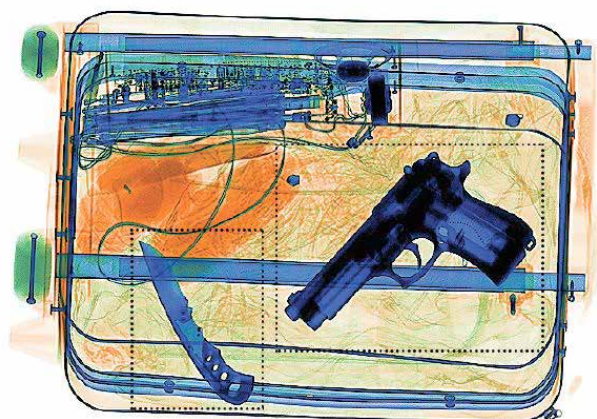
Our goal is simple - to provide the security, peace of mind and freedom of movement upon which the world depends.

LATEST INNOVATION

A family of smart and adaptable algorithms for the automatic detection of dangerous, prohibited and contraband goods and substances, **iCMORE** provides accurate, reliable and powerful detection capability to Smiths Detection X-ray and CT screening solutions, helping to reduce the burden on image analysts and improve detection/screening outcomes.

AIRPORT APPLICATION

iCMORE delivers the highest level of threat detection of a variety of threats, controlled and prohibited items. By doing so it also improves operational efficiency, and supports more efficient resource planning, for customs officers, security operators and other controlling authorities. Delivering improved levels of both safety and security, it is designed to identify potential threats and help combat the movement of unsafe, undeclared or illegal items.





- Safety • Luggage security screening



COMPANY

VISIOM, leading the luggage security screening sector, distributes a systems solutions range for its Customers needs throughout France and Export.

VISIOM is a perennial partner for air, maritime or ground sectors.

LATEST INNOVATION

To answer the constant inscrease of air passenger traffic, VISIOM proposes proven technology solutions for screening systems as of now. Based on EDS Cabin, multiplexing, TRS systems, ... VISIOM provides scaled architectures improving passengers facilities, giving the possibility to real-time control its infrastructures, and fulfill the regulatory requirements to come.

AIRPORT APPLICATION

Deploying these architectures changes the old checkpoint scheme. The **ClearScan EDS Cabin** technology significantly reinforces the air transport safety, allowing the passenger to keep its belongings (laptops, liquids,...). The safety operators working conditions are also increased with moving the 3D analysis posts in dedicated and secure areas, for a quiet and reliable luggage analysis.





FOR FURTHER INFORMATION

www.proavia.com



50 rue Henry Farman • 75015 PARIS • info@proavia.com
Tél +33 1 58 09 35 97 • Fax +33 1 58 09 35 54