



FRENCH AIRPORT AND ATC TECHNOLOGY TRADE ASSOCIATION

www.proavia.com



- | | | |
|---------------------------------------|-------------------------------------|-------------------------------------|
| ✈ AÉROPORT NICE CÔTE D'AZUR SA | ✈ COLAS SA | ✈ IN GROUPE |
| ✈ AIA Life Designers | ✈ CS France | ✈ MASER ENGINEERING |
| ✈ AIRBUS PROTECT | ✈ DAIA | ✈ ORNISEC |
| ✈ Airport Fluid Distribution Networks | ✈ DASSAULT SYSTEMS | ✈ OSP HOLDING / ORBILITY |
| ✈ ALE INTERNATIONAL | ✈ DEF | ✈ OTIS France SCS |
| ✈ ALFYMA | ✈ DEGREANE HORIZON | ✈ OUTSIGHT |
| ✈ ALPHA AIRPORT | ✈ EGIS AVIA | ✈ PIXYS SAS |
| ✈ ALPHA CIM | ✈ EIFFAGE CONCESSIONS | ✈ RESA |
| ✈ ALSTEF AUTOMATION SAS | ✈ EKIUM | ✈ SCHNEIDER-ELECTRIC INDUSTRIES SAS |
| ✈ APAVE | ✈ ENIA architectes | ✈ SETEC INTERNATIONAL |
| ✈ ARC INFORMATIQUE | ✈ ENVISA SAS | ✈ SMITHS DETECTION France S.A.S. |
| ✈ ARTELIA HOLDING | ✈ FRACS - France AVIATION SERVICES | ✈ SYSTRA France |
| ✈ AUGIER SAS | ✈ GROUPE ADP | ✈ TG CONCEPT |
| ✈ BODET TIME & SPORT | ✈ GUINAULT | ✈ THALES |
| ✈ BOUYGUES BÂTIMENT INTERNATIONAL | ✈ HUB PERFORMANCE | ✈ VINCI Airports SAS |
| ✈ CC-CONSULTING | ✈ IDEMIA Identity & Security France | ✈ VISIOM |
| ✈ CODRA | ✈ IER EASIER | ✈ WaltR |
| | ✈ INEO E&S | |

REFERENCES

- ✈ Tahiti Airport
- ✈ Corsica Airports
(Ajaccio, Bastia, Calvi, Figari)
- ✈ French West Indies and
Overseas territories
- ✈ Cyprus Bot Project
- ✈ Cameroon Airports
- ✈ Cayenne
- ✈ Dakar Airport
- ✈ Sion Airport

AÉROPORT NICE CÔTE D'AZUR SA

Provides consultancies, services and training, project management, safety and environment audits, route development, management contracts and concessions.



REFERENCES

- Roland Garros Airport, Réunion island
- Nantes Atlantique Airport, France
- Aimé Césaire Airport, Martinique island
- Toulouse Blagnac Airport, France

Architecture

Engineering

Environment

Natural ventilation

SUSTAINABLE AIRPORTS



diagnostic facilities

network design

definition of
markets

monitoring
realization and
commissioning
installations

REFERENCES

- International Airport Felipe ANGELES | MEXICO
- IVATO International airport | MADAGASCAR
- ROISSY CHARLES DE GAULLE
Paris international Airport | FRANCE
- PARIS-ORLY Airport | FRANCE

AIRPORT FLUID DISTRIBUTION NETWORKS

Consultant in the field of hydrants (Jet-fuel networks)
or other fluids (water, glycol ...)



AIRBUS

PROTECT

risk management

safety

cybersecurity

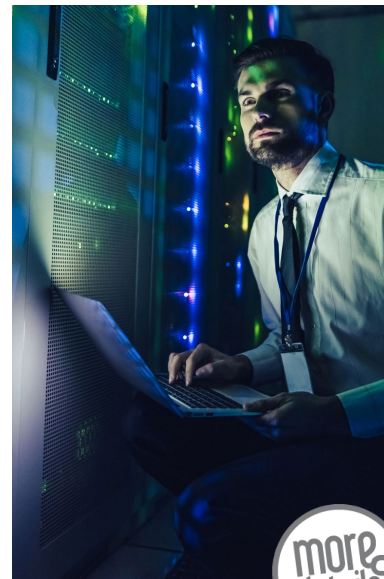
sustainability

AIRBUS PROTECT

is an Airbus subsidiary bringing together expertise in safety, cybersecurity and sustainability-related services.

REFERENCES

- ✈ DSNA
- ✈ AIRBUS
- ✈ NATS
- ✈ NAV CANADA
- ✈ EUROCONTROL
- ✈ IAA
- ✈ ENAC
- ✈ ESSP
- ✈ ENAV
- ✈ LEONARDO
- ✈ SOPRA STERIA
- ✈ THALES



more
details



Alcatel-Lucent
Enterprise

IoT

LAN networks

WiFi networks

cloud solutions

Alcatel-Lucent Enterprise (ALE)

provides the air transport sector with the technological building blocks to connect all transport subsystems.

ALE provides solutions for WiFi networks, industrial LAN networks for the IoT (Internet of Things), voice and video communications subsystems, as well as secure cloud solutions.

REFERENCES

- ✈ Lyon airport
- ✈ GRU Airport - São Paulo International Airport



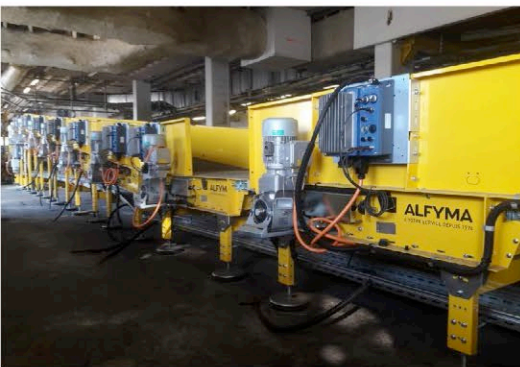


ALFYMA
WITH YOU SINCE 1974

Baggage Handling Automated System

tray return system

conveyors



Alfyma can meet any airport's request, from passenger security checkpoint to baggage handling system and reclaim. And our large flexibility allows us to suit any logistic process automation.



REFERENCES

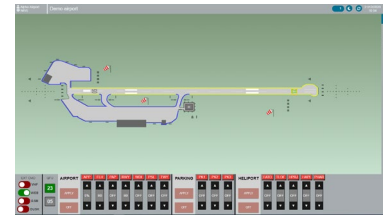
- ✈ Paris Roissy
- ✈ Paris Orly
- ✈ Toulouse Blagnac
- ✈ Geneva Airport
- ✈ Nouméa Airport
- ✈ Nantes Atlantique
- ✈ Luxembourg Airport
- ✈ Lisbonne Humberto Delgado
- ✈ Bordeaux Mérignac
- ✈ Tahiti Airport
- ✈ Bale Mulhouse

REFERENCES

- ✈ French DGAC (control tower)
- ✈ French Air Force (AGL)
- ✈ Bulgaria (AGL)
- ✈ Morocco (AGL)
- ✈ Algeria (12 helistations)
- ✈ Republic of Congo / RVA
(Terminal Equipment, AGL)
- ✈ Ethiopian Airlines (AGL, BHS)
- ✈ Seychelles (SCAA Security systems)
- ✈ Ivory Coast (Airport systems)
- ✈ Senegal (AGL)

ALPHA AIRPORT : Landside and Airside solutions

From airport equipment assembly to airfield lighting system design and installation, ALPHA-AIRPORT is a leading integrator in the airport system industry.



more
details





Airfield Lighting

Baggage Handling

Fire System

Access Control

BMS

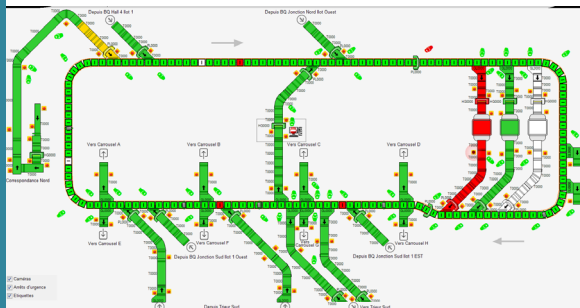
ALPHA-CIM

Leader in automation systems integration and industrial IT, ALPHA-CIM offers innovative and turnkey solutions in software, SCADA, Automation, network, cybersecurity for Airports. Our expertise covers audits, consultancy, design, development, MOC and training.

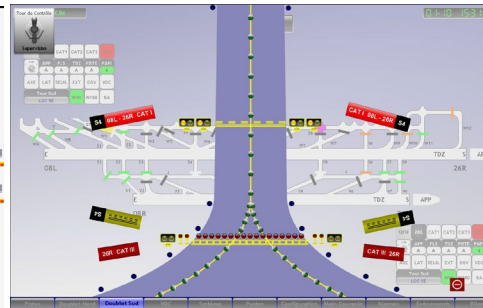
ALPHA-CIM solutions are based on standards, is open to interfaces, user friendly, expandable, multi-brands to propose the most efficient, cost effective and reliable results.

REFERENCES

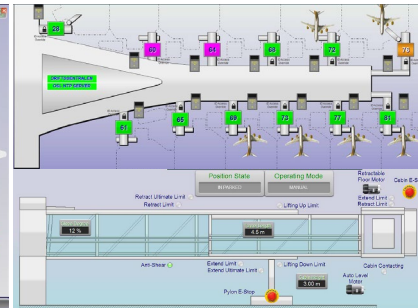
- Paris Charles de Gaulle
- Paris Orly
- Oslo International airport
- Mohammed V Int airport (Casablanca)
- Orange military air-base
- Marseille Provence airport
- Nice Côte d'Azur airport



BAGGAGE HANDLING



AIRFIELD LIGHTING



PASSENGER BRIDGE

ALSTEF GROUP

specializes in designing, building, and commissioning complete baggage handling systems, including innovative solutions with high-speed AGV and predictive maintenance, as well as air cargo systems.

REFERENCES

- ➔ Mexico - Felipe Ángeles Intel Airport – Mexico
- ➔ New Zealand - Auckland Airport
- ➔ France - Charles de Gaulle Airport - Paris
- ➔ Canada - Pierre Elliot Trudeau – Montreal
- ➔ France - Nice Côte d'Azur Airport
- ➔ Croatia - Franjo Tudman Airport – Zagreb
- ➔ France - Saint Exupery Airport – Lyon
- ➔ Mauritius – Sir Seewoogasur Ramgoolam
- ➔ Madagascar – Antananarivo – Ivato
- ➔ Russia - Sheremetyevo Airport - Moscow

baggage handling systems

aircargohandling

maintenance and operation



REFERENCES

- ➔ Bacau (Romania) airport
- ➔ Beyrouth (Lebanon) airport
- ➔ Bharein airport
- ➔ Bruxelles (Belgium) airport
- ➔ Dubai (United Arab Emirates) airport
- ➔ Carasco (Uruguay) airport
- ➔ Cotonou (Benin) airport
- ➔ Luxembourg airport
- ➔ Montevideo (Uruguay) airport
- ➔ Moscou (Russia) airport
- ➔ Niamey (Niger) airport
- ➔ Oslo (Norway) airport
- ➔ Tokyo Narita (Japan) airport
- ➔ Yaoundé (Cameroon) airport

Pc Vue France

is a global player in monitoring software for the Power, industrial processes, utilities and infrastructure sectors





#RiskManagement

#Certification

#Inspection

#Consulting

#Training

#Tests&Measures

Our 5 business activities are complementary and enable you to combine safety and performance at every stage of your projects.

Inspection

We check the reliability of your facilities, equipment, structures, infrastructures and buildings to keep them compliant during commissioning as well as operation.

Training

We are the leader in Risk Management and Safety training. Our unique model using trainer-inspectors enables 350,000 people each year to take part in training that culminates in certification, a real credential for their professional futures.

Tests & Measurements

We carry out testing of all types using simulators that reproduce actual stresses. We also take air, water and soil samples and measurements to monitor their quality and better manage your risks and impact on the environment.

Consulting and Technical Support

We help you improve the health and safety of people and property, preserve the environment and optimise the performance of your installations and equipment.

Certification & Labelling

We certify your systems dedicated to management, skills, products or services. We also define labels in line with a strict reference framework.

REFERENCES

- ADP
- Marseille Airport
- Lyon Airport
- Alstef
- EMBROSS
- Aviapartner
- Menzies
- Cameroon Airport
- AENA
- Ivory Coast Airport





Top 1%
of architecture &
engineering companies

Artelia is a 6 000 staff multinational, multidisciplinary consultancy, engineering and project management group specializing in the construction, infrastructure and industry sectors.

« **Our Missions :** Design, Project Management, Construction Supervision, Independant Engineer, Climate Change Impact Assesment, Fuel Supply Systems, Automatic People Movers »

REFERENCES

- Roland Garros airport
- Paris Airports ORY+ CDG
- Marseille Provence Airport
- Nice Airport
- Copenhagen Airport :
50 years of PARTNERSHIP



OCЕМ Airfield / Augier Energy

We are partners to well over 1,500 airports on all continents with a clear focus to make the airfield safer, more efficient and more sustainable with its advanced airfield ground lighting and energy solutions.

REFERENCES

- Paris airports CDG ORY LBG
- Honk Kong International HKIA
- Kuala Lumpur airport KLIA
- Guangzhou airport CAN
- Fujairah airport FJR
- Valencia airport VLC
- London City Airport
- Roma airport FCO
- Madrid airport MAD
- Barcelona airport BCN





Time Display

Synchronisation

BODET

A long-established name in synchronisation and time display in the transport sector, including airports.

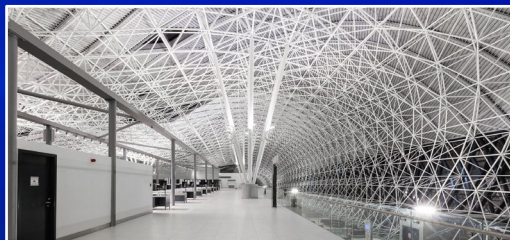
REFERENCES

- Adolfo Suárez Madrid-Barajas Airport, Spain
- Lyon-Saint-Exupéry Airport, France
- Milan Malpensa Airport, Italy
- Lisbon Airport, Portugal
- Budapest Ferenc Liszt International Airport, Hungary
- Warsaw Chopin Airport, Poland
- Sofia Airport, Bulgaria
- Cairo International Airport, Egypt
- Ankara Esenboga International Airport, Turkey
- Algiers International Airport, Algeria
- New Bangkok International Airport, Thailand
- Soekarno-Hatta International Airport, Jakarta Indonesia

Bodet
Time



more
details



BOUYGUES CONSTRUCTION AIRPORT CONCESSIONS

Airport infrastructure developer with a long-term understanding of the business and its stakeholders, to provide sustainable innovations and Carbon neutral value enhancement.

“An Airport is a real city in itself”

PPP REFERENCES

- ➔ Antananarivo Airport (Madagascar)
- ➔ Iqaluit Airport (Canada)
- ➔ Larnaka Airport (Cyprus)
- ➔ Nosy be Airport (Madagascar)
- ➔ Paphos Airport (Cyprus)
- ➔ Zagreb Airport (Croatia)

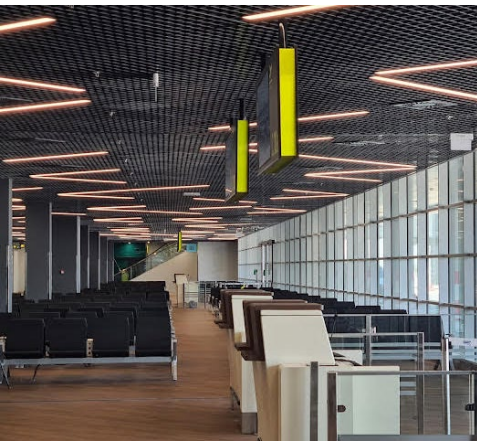
Zagreb Airport (Croatia)

CC-CONSULTING provides engineering and assistance for Terminal equipments and supplies global solutions, from traveler departure to arrival and from aircraft take-off to landing.



REFERENCES

- ✈ Roissy CDG Airport - France
- ✈ Cairo Airport - Egypt
- ✈ Bamako Airport - Mali
- ✈ Dushanbe Airport - Tajikistan
- ✈ Tripoli Airport - Libya
- ✈ Zagreb Airport - Croatia
- ✈ Belgrade Airport - Serbia
- ✈ Yaounde Airport - Cameroun

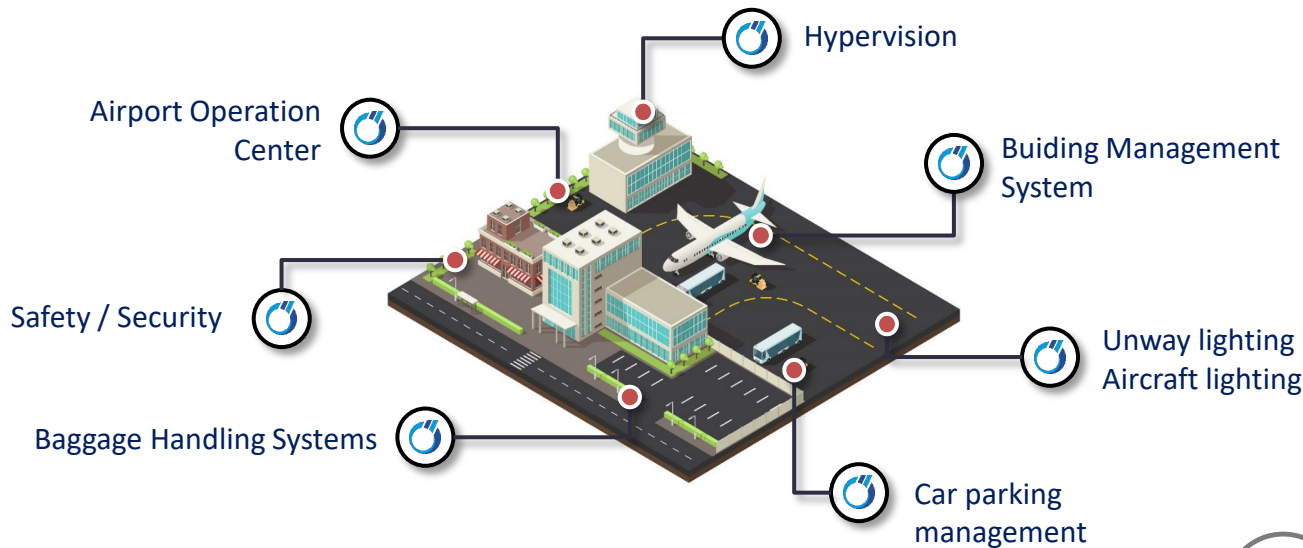




CODRA provides a real-time data platform to address the challenges of the smart-airports. Our technologies is the stepping stone to the next level of your innovation projects by being the backbone of your industrial information system.

REFERENCES

- ✈ Orly Airport
- ✈ Roissy Airport
- ✈ Lille Airport
- ✈ Toulouse Airport
- ✈ EuroAirport
- ✈ Gatwick Airport
- ✈ Dublin Airport
- ✈ Birmingham Airport
- ✈ Heathrow Airport
- ✈ Manchester Airport & DGAC

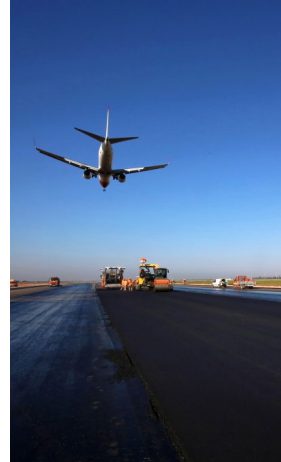


COLAS | Aviation & Defense

Colas puts its know-how into action for your airport or air-base infrastructure projects. From refurbishing airfield pavement to more complex design and build, your projects can all benefit from the strength of the Colas Group's longstanding expertise, backed by a global network.

LAST REFERENCES

→ AGA	Agadir
→ BKK	Bangkok
→ CYS	Cheyenne
→ LGW	Gatwick
→ LUX	Luxembourg
→ TNR	Ivato
→ LAX	Los Angeles
→ MSS	Massena
→ NOS	Nosy-Be
→ ORY	Orly
→ CDG	Roissy
→ OST	Oostende
→ ORK	Cork
→ YFB	Iqaluit
→ YXY	Whitehorse
→ TTU	Tétouan





Construction Specialties®

Building materials

JointCovers

Louvers

SunControls

WallProtection

HygienicWalls



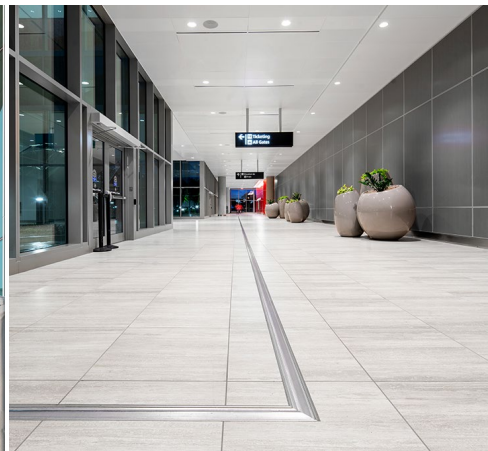
Construction Specialties France

With years of experience serving the aviation and transportation market, we understand the unique challenges facing architects, facility owners and their construction partners looking to build the next great destination.

REFERENCES

- Roissy Charles de Gaulle
- Orly
- Larnaka International Airport
- Moscow-Domodedovo
- Bahreïn International Airport
- JFK International Airport
- Washington DC
- CDIA Terminal A

View more projects :
https://bit.ly/cs_aviation



North American Operations : www.c-sgroup.com | European Operations : www.c-sgroup.eu

DASSAULT SYSTEMES

Airport Experience is an integrated solution powered by the 3DEXPERIENCE® platform, allowing you to create a virtual twin experience that provides insights into your airport operations, infrastructure and passenger experience.

REFERENCES

- ✈ Copenhagen Airports
- ✈ Dubai Airports
- ✈ Gatwick Airport
- ✈ Brussels Airport

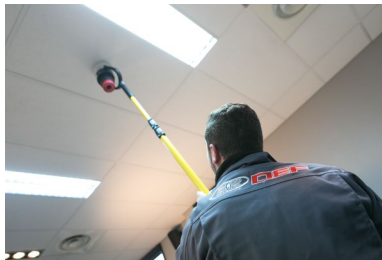


DEF

Relying on its know-how as a builder and its network of expert companies, DEF offers a complete range of fire safety system solutions and services for Airport projects, around the world.

REFERENCES

- ✈ Algiers airport (Algeria)
- ✈ CDG Airport (Paris)
- ✈ Bagdad International Airport
- ✈ Aimé Césaire International Airport (Fort de France)
- ✈ Algiers Airport Domestic Terminal
- ✈ Pochentong Airport (Phnom Penh)
- ✈ La Tontouta International Airport (Nouméa)



DEGREANE HORIZON

The Weather Sense : Turnkey projects in airport meteorology

REFERENCES

30 years

100 countries

400 airports

Wide Range of Products

STRONG RESEARCH & DEVELOPMENT POLICY

DEGREANE HORIZON focuses on Turnkey solutions based on in-house manufactured automatic weather stations and sensors



A W O S

AUTOMATED WEATHER OBSERVING SYSTEM
AND WIND PROFILER
FOR AERONAUTICAL APPLICATIONS

PCL1300 Wind Profiler

KNOW-HOW, QUALITY & TECHNICAL EXCELLENCE



- ✓ REAL TIME VERTICAL PROFILING OF WIND & DIRECTION
- ✓ TEMPERATURE PROFILING WITH RASS



APPLICATIONS :

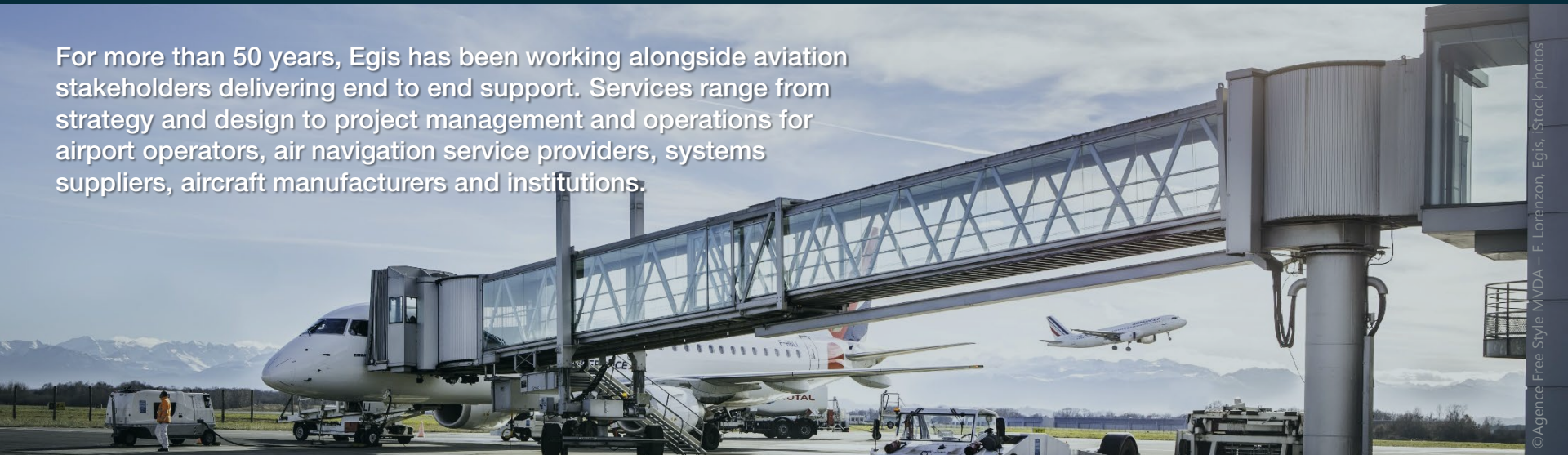
- ✓ Wind Shear Detection
- ✓ Wind profiles for assimilation into Numerical Weather Prediction Systems
- ✓ Measurement campaigns for atmospheric research
- ✓ Sporting events



The Weather Sense

more details

For more than 50 years, Egis has been working alongside aviation stakeholders delivering end to end support. Services range from strategy and design to project management and operations for airport operators, air navigation service providers, systems suppliers, aircraft manufacturers and institutions.



© Agence Free Style MVDA – F. Lorenzon/egis, iStock photos

REFERENCES

- Hong Kong CAD – System engineering & safety lead for ANS equipment upgrade for the three-runway system project
- Groupe ADP – Project management partners for IT systems at Paris airports
- Skeyes – Wide-ranging consultancy & strategy advisory
- Operations & Management – Shareholder & partner of 20 airports
- Matarat Holding – Consulting services and continual improvement support across 26 airports in Saudi Arabia



REFERENCES

- Lille airport
- Toulouse airport

EIFFAGE

Eiffage is one of Europe's leading construction and concessions companies. In 2019, Eiffage began operating the concessions for the airports in Lille and Toulouse. The airport sector allows us to strengthen our local roots in the regions where we are present, while following a low carbon strategy.





EKIUM

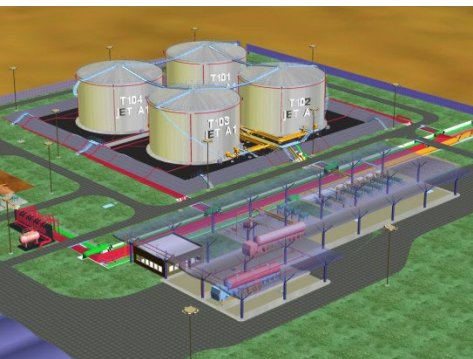
Engineering

Project management

Hydrant system

EKIUM

provides engineering and project management services for fuel farm and fuel supply systems firefighting, safety, security expertise, electrical and HVAC services.



REFERENCES

- ➔ Bucharest Airport – Hydrant system
- ➔ Doha Airport – Hydrant system
- ➔ Jeddah Airport – Hydrant system
- ➔ Dakar – Senegal – Design audit





INTERNATIONAL AIRPORT OF GASSIM, ARABIE SAOUDITE



GUADELOUPE AIRPORT, FRANCE



INTERNATIONAL AIRPORT OF OUAGADOUGOU, BURKINA FASO

Founded in Paris in 2003, **ENIA architectes** is one of the top 50 architecture and design firms in France. The office is supported by a solid and enthusiastic staff of 80 collaborators from 17 different nationalities and delivered projects across a wide range of industries varying in both scales and building types most notably in the transport sector.

Since 2005 **ENIA architectes** actively develops an international activity with projects in Asia, Africa, South America and Europe. The firm has partnerships in Tunisia, Brazil, Japan, several west and central African countries and an indian subsidiary with 30 collaborators based in Delhi since 2015.

REFERENCES

- ✈ Lille-Lesquin, France
- ✈ Pune, India
- ✈ Ouagadougou, Burkina Faso
- ✈ Guadeloupe, France
- ✈ Carcassonne, France
- ✈ La Réunion, France
- ✈ Djermaya, Republic of Tchad
- ✈ Gassim & Al Jouf, Saudi Arabia
- ✈ Saint Kitts and Nevis
- ✈ Bâle Mulhouse, Switzerland
- ✈ Bordeaux, France
- ✈ Tahiti, French Polynesia
- ✈ Cayenne, French Guinea
- ✈ Geneva, Switzerland



#carbon management

#air quality

#noise

#research

#ESG

#environment

#sustainable

#roadmaps

Supporting major airport groups and European Institutions for more than 20 years with unique expertise in understanding environmental impacts and sustainable practices, developing realistic pathways to deliver on ambitious goals for the future.



REFERENCES

- ADP
- Vinci
- Eiffage
- Egis
- Riyadh King Khalid Intl Airport
- Narita Airport

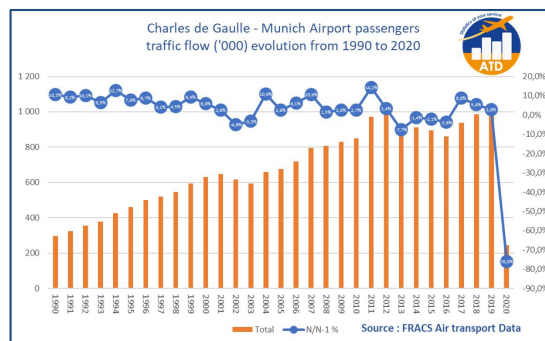
REFERENCES

- ✈ AIR TRANSPORT DATA :
 - « 30 years of history »
 - « 3 databases - Airlines - Airports - Traffic flows »
 - Civil aviation regulations
- ✈ ATD Analytics :
 - « e-platform »
 - « Air Traffic worldwide »HAITI :
 - Safety Oversight Authority
 - Safety Management System
 - ATCO manuals
- ✈ SUDAN : Restructuration of Sudan's Airspace
- ✈ AIRBUS • CGX • EGIS
 - INNOV'ATM • METSAFE
 - ADP • VINCI • SNCF
 - Jeune Afrique

FRANCE AVIATION CIVILE SERVICES (FRACS)

Expertise & Consultancy Office of the French Civil Aviation

- Tailor-made solutions
- Proven operational expertise
- Agile and flexible approach
- Worldwide consultancy activities



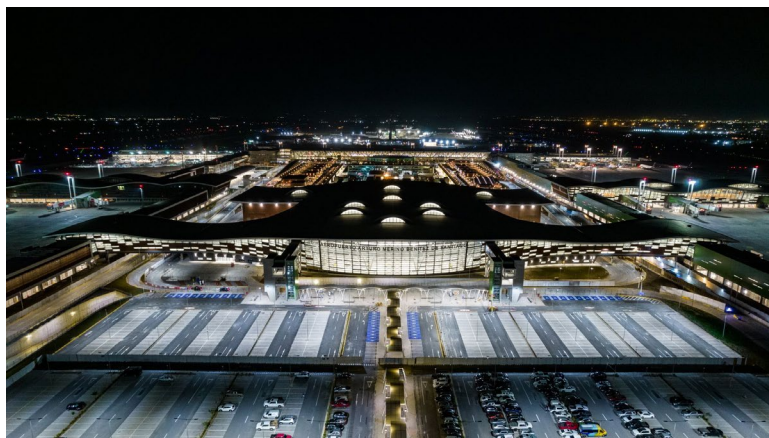
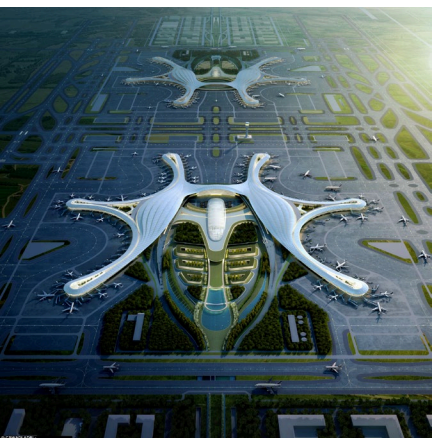
more details

GROUPE ADP

Groupe ADP is a world leader in airport design, construction and operation.

REFERENCES

- Beijing-Daxing International Airport,
- Chile-Arturo Merino Benitez international airport,
- Chengdu-Tianfu International Airport





GPU

ASU

ACU

APU OFF

PCA

REFERENCES

- Airbus
- Fraport
- Munich Airport Ground Services
- Aéroports de Paris
- Nice Airport
- DNATA (Emirates)
- Swissport
- United Airlines
- UK MoD
- ETIHAD Airlines
- Saudi Ground Services
- Abu Dhabi Airport
- DHL Express



GUINAULT SA

Manufacturer of aircraft APU substitution solutions on ground :
Aircraft Ground Power / Air Conditioning / Air Start Units
and distribution (Cable retriever, Air Hose retriever)
Electric – Diesel - Battery



HUB PERFORMANCE

provides passenger terminal capacity planning and performance measurement, Baggage and cargo handling simulation and optimization, Passenger flow management.

REFERENCES

- ✈ Paris CDG 2E S3
- ✈ Paris ORLY Junction
- ✈ Lyon,
- ✈ Bordeaux Mérignac
- ✈ EuroAirport
- ✈ London Heathrow Q6 T1, T2 & T3
- ✈ London Gatwick South terminal
- ✈ Athens International
- ✈ Geneva
- ✈ Liège



PAX2SIM

SIMCORE SOFTWARE

PASSENGER CAPACITY PLANNING

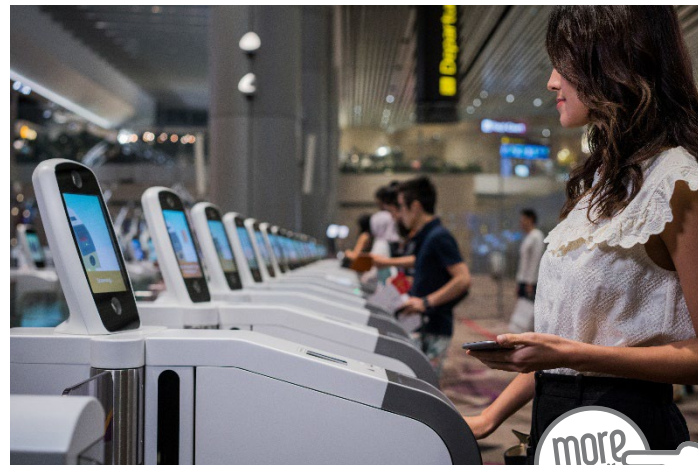
IDEMIA

- The world leader in **identity management** and **biometric** technologies
- Supporting **Governments** and **Airports** operators to **secure borders** and **facilitate the passenger journey**

REFERENCES

✈️ **+250 airports** use our biometrics solutions worldwide (incl. **Paris, Bogota, Los Angeles, Abu Dhabi, Changi, Delhi, Sydney...**)

✈️ **+30 Governments** secure their **borders** with our solutions (incl. **eu-LISA, France, USA, UAE, Singapore, Australia, Chile...**)



REFERENCES

➔ Self-service check-in kiosks

Air New Zealand, Aéroports de Paris, Aena, Hermes Airport Ltd, Royal Air Maroc...

➔ Automated Border Control

Abu Dhabi Airport, Montréal Airport, Switzerland Airports, Aéroports de Paris (PARAFE), Tampa Airport, Entebbe Intl. Airport ...

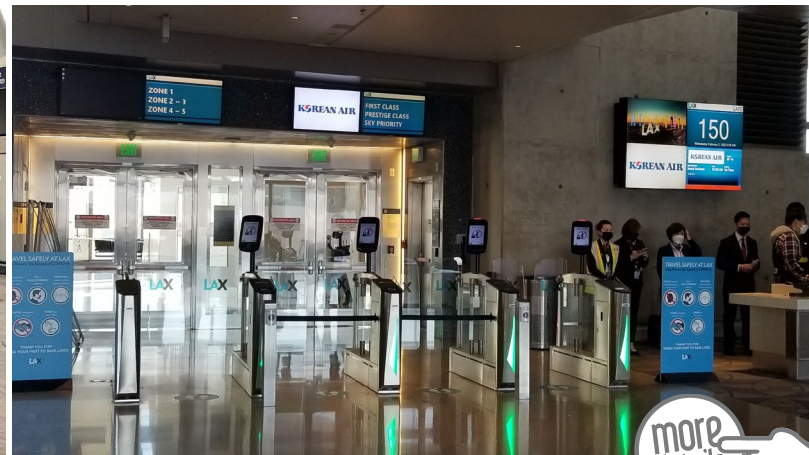
➔ Self-boarding gate

Los Angeles Intl. Airport, Sochi Airport, Split Airport, Quito Airport...

➔ Gate reader

THE EXPERT OF SELF-SERVICE SOLUTIONS

Actively engaged in the evolution of technologies, EASIER provides a comprehensive range of high-end products and services to airports and airlines, ground transportation operators and public Institutions.



REFERENCES

- ➔ REDDIG = VSAT Network ICAO / South America
AERIA = Airfield lighting, ATC, Energy of Abidjan International Airport
- ➔ ASCENA = VSC, ATIS, ATM, MET, AMHS, System Provision ATC Simulators

INEO Energy & Systems

Communication & information system integrator for ATC and aeronautical systems :
navaids, area control centre, telecommunication networks, control power stations
and airfield lighting.

IN GROUPE

Trusted provider for :

- **Physical and digital travel documents :**
Passport, ID Card, Crew Member card
- **Biometric authentication of passengers :**
Face, fingerprint, Iris, Voice
- **Border control : eGate, OneID, EES/ETIAS**

REFERENCES

**Main references for eGates
& Immigration Border Control:**

- ✈ Nice Airport
- ✈ Marseille Airport
- ✈ Lyon Airport
- ✈ Bordeaux Airport
- ✈ Basel Mulhouse
- ✈ CapTown (South Africa)
- ✈ Myanmar
- ✈ French/UK sea ports
(Calais, Coquelles, Folkstone)



more
details



MASER ENGINEERING

Electromechanical maintenance

Passenger bridges maintenance



REFERENCES

- ➔ Paris CDG
- ➔ Orly airport
- ➔ Mauritius island airport
- ➔ Nice Côte d'Azur airport
- ➔ Nantes Atlantique airport
- ➔ Toulouse Blagnac airport
- ➔ Brest Bretagne airport
- ➔ Strasbourg airport

MASER ENGINEERING

Full-service, preventive, corrective and improving maintenance of airport installations and also ensures all the work associated with equipment of all types: electronic, electromechanical, hydraulic, mechanical
PBBs retrofit



REFERENCES

- ➔ Geneva
- ➔ Toulouse Blagnac
- ➔ Roland Garros – La Réunion
- ➔ 7 Saudi regional airports
- ➔ Atlanta
- ➔ Phnom Penh
- ➔ Cyprus Airports



ORBITY

World leader in innovative Parking Management Systems

Cybersecurity Experts For airports



Leader in cyber security for airline industry

ORNISEC is a leading company in the field of aviation cybersecurity. Its consultants, based in France and Morocco, work with the IT and technical departments of airports and airlines to strengthen their level of resilience in terms of cybersecurity and to comply with the legal and regulatory framework for the protection of aviation infrastructure.

Security audit

Architecture audit, configuration audit, code audit, penetration testing

External CISO

Chief Information Security Officer as a service, security management, Reporting

Consulting

Security policies, expertise, risk management, security programs

Regulatory compliance

Compliance with : LPM, RGPD, NIS Directive , ISO27001, OACI, EASA

Incident response

Business Continuity, Crisis Management

Training & Awareness

Phishing simulation, traingin, awareness adapted for airoports



"Ornisec offers cyber expertise combined with a perfect knowledge of the airport environment." CISO AÉROPORT MONTPELIER

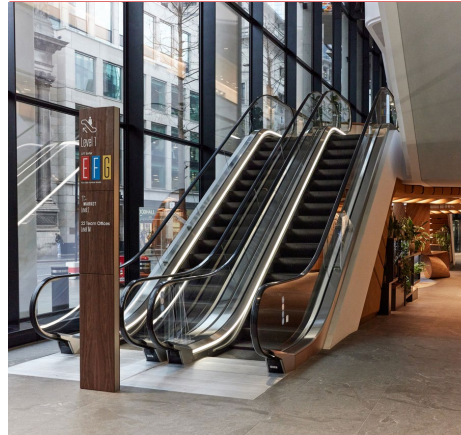


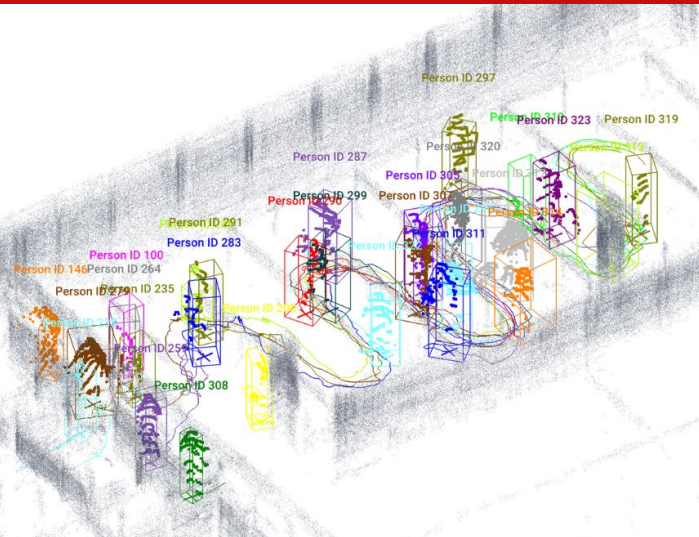
OTIS France

Manufacture of elevators, escalators, moving walkways
Installation, maintenance, repair, modernization.

REFERENCES

- Abu-Dhabi Airport - UAE
- Kuwait Terminal 2
- Istanbul Airport – TURKEY
- Charles de Gaulle – France
- Orly- France
- Manchester Airport - UK
- Faro Airport – Portugal
- Detroit NW Terminal - USA





OUTSIGHT

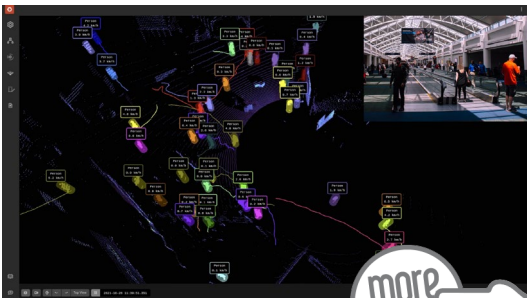
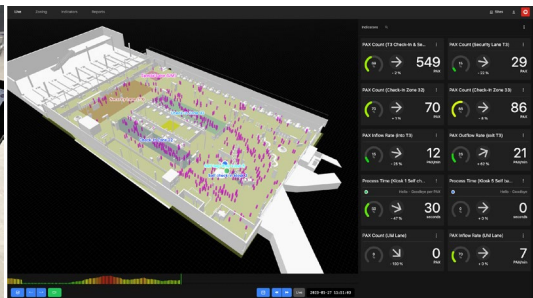
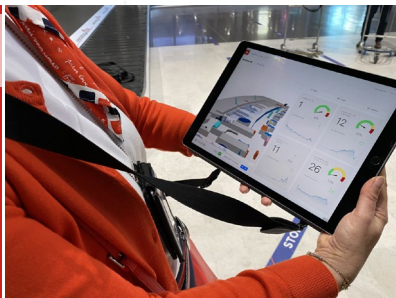
Advanced People Flow & Crowd Management solutions at airports

- LiDAR-based Software Solutions

Throughout airport terminals and at all key touchpoints from curb to gate,
the software leverages the unique value of 3D LiDAR data to anonymously track passengers and monitor queues in real-time.

REFERENCES

Hundreds of customers in 5 continents use Outsight technology to monitor the flow of People and Vehicles



PIXYS

Experts in Airport Total Operations Management and Airport Operations Centers (APOC/AOCC) engineering.

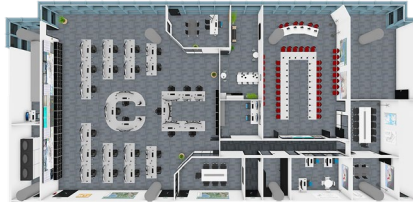
Global Airport Systems Integration with AgiWare® TOPS and Total Operations Management with AgiWare® TOMS.



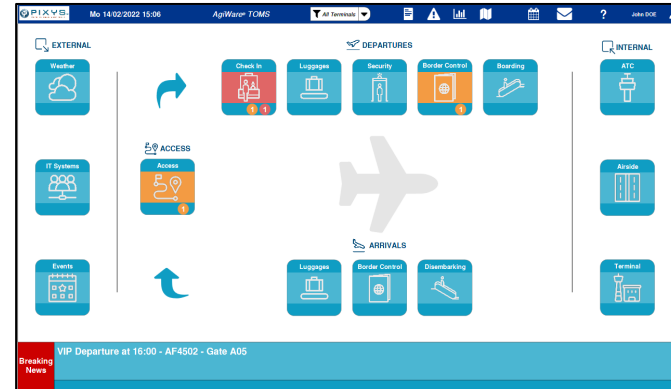
Global Airport Integration DashBoard

REFERENCES

- ✈ Nice Airport
- ✈ Geneva Airport
- ✈ Paris-Orly Airport
- ✈ Macau Airport
- ✈ Toulouse Airport
- ✈ Marseille Airport
- ✈ Lyon Airport



APOC / AOCC
Engineering



Total Operations Management

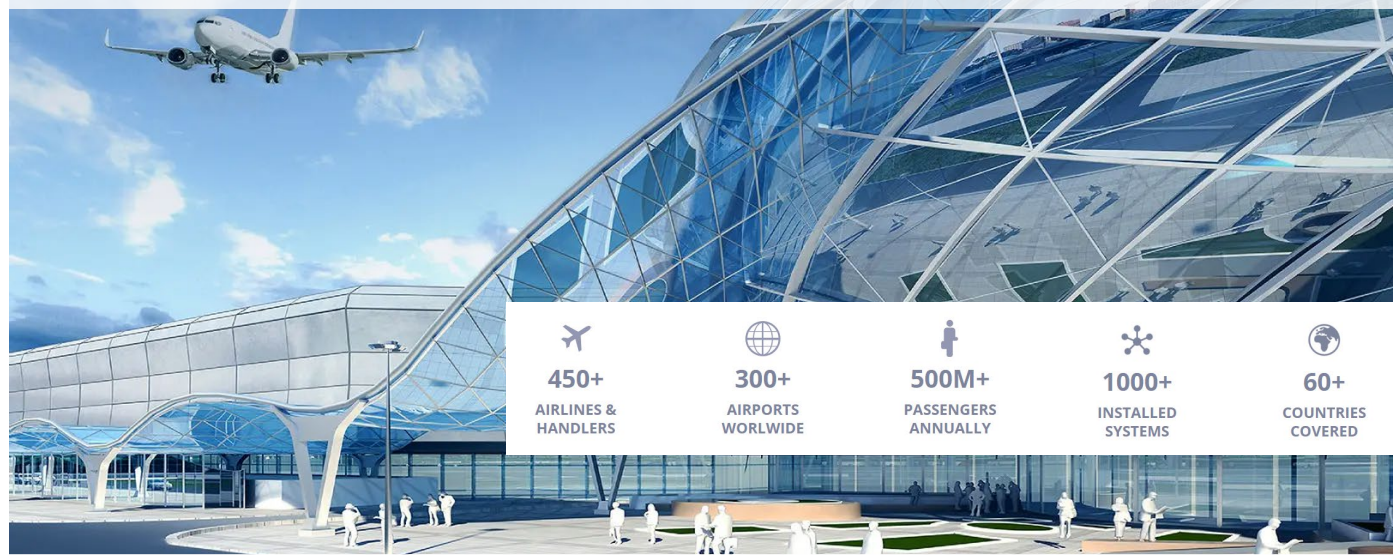
REFERENCES

- Montreal
- Paris
- Vilnius
- Roma
- Luxembourg
- Lagos
- Santo Domingo
- Mexico
- Bangkok
- Tunis
- Karachi
- Naples
- Bamako
- Kilimanjaro
- Luanda
- Mauritius
- Riga
- San Salvador

RESA develops, markets, and maintains a wide range of **integrated software solutions**

covering all airport IT needs in 60+ countries :

Passenger check-in and boarding, baggage tracking and reconciliation, passenger tracking, automatic gates, self-service kiosks and biometrics, self-bag drop, flight and resource management, invoicing, statistics, business intelligence and information broker



450+
AIRLINES &
HANDLERS



300+
AIRPORTS
WORLDWIDE



500M+
PASSENGERS
ANNUALLY



1000+
INSTALLED
SYSTEMS



60+
COUNTRIES
COVERED

www.resa.aero

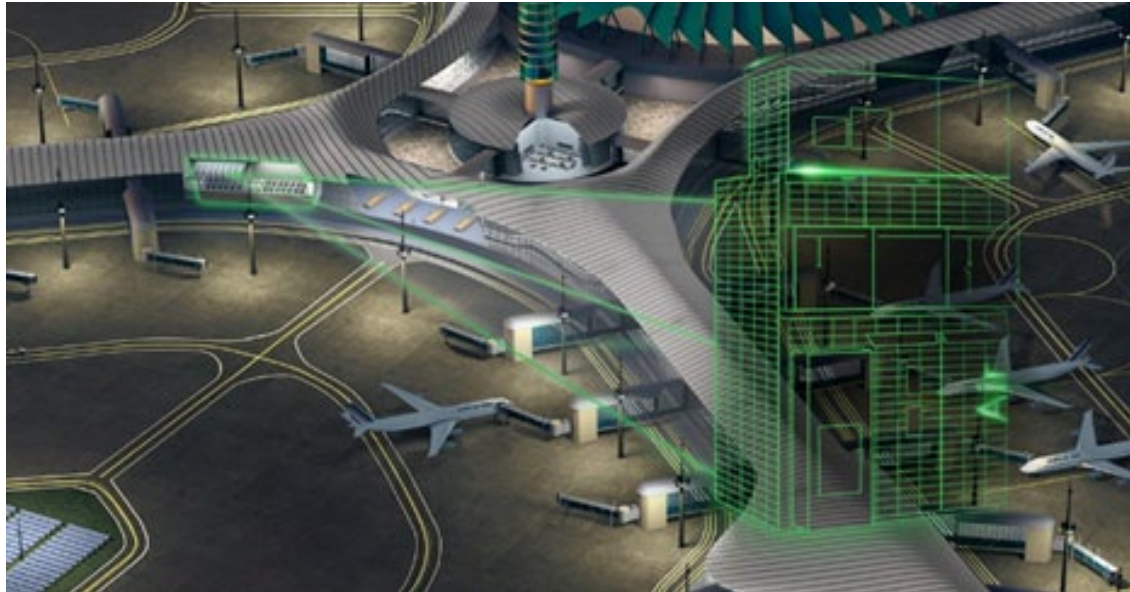


SCHNEIDER ELECTRIC

Digital transformation of energy & automation for reliable electrification, efficient operations and decarbonized airports of the future.

REFERENCES

- ✈ Changi Airport – Singapore
- ✈ Barcelone El Prat Airport
- ✈ Geneva Airport
- ✈ Calgary Airport – Canada
- ✈ JFK Terminal 1 microgrid – USA



REFERENCES

- ✈ Airport of Ouagadougou, Burkina Faso
- ✈ Airport of Tahiti, French Polynesia
- ✈ Airport of Sihanoukville, Cambodia
- ✈ 11 Airports in Brazil
- ✈ Airport of Santiago del Chile, Chile
- ✈ Airport of Tananarive, Madagascar
- ✈ Airport of Conakry, Guinea
- ✈ Airports of Marrakech, Agadir, et Tangier, Morocco
- ✈ Airport of Dubrovnik, Croatia
- ✈ Airport of Mayotte, France
- ✈ Airport of Maldives



SETEC INTERNATIONAL

Leading player in project design, construction and management as well as client assistance and representation

SMITHS DETECTION

A global leader in threat detection and screening technologies for aviation, ports and borders, urban security and defence markets.

"90% of world's busiest airports rely on our solutions"



Hi-Scan 6040 CTiX



CTX 5800



IONSCAN
600

REFERENCES



- ➔ 40+ years of experience in aviation security
- ➔ 25+ years in CT technology
- ➔ 4,000+ hold-baggage solutions
- ➔ 2,000+ multi-view X-ray
- ➔ 26,000 explosive trace detection



SYSTRA

SYSTRA is a consulting and engineering company, specialist in mass transportation and mobility. Our dedicated aviation business line provides consulting & advisory support, design and project management services to airport owners, regulators, operators and investors.

Our aviation experts apply their global knowledge and airport operational experience, working with our local teams and tailoring solutions to every client.

We work worldwide with airport planners, architects and engineers to design passenger and cargo terminals, ground transport facilities, airport people mover, road networks, car parks, runways, taxiways, aprons, baggage systems and many other airport specialist facilities.

For any further enquiries please contact Mathieu CAPERAN - Commercial Director :

contactfrance@systra.com

+33 (0)6 19 38 88 91

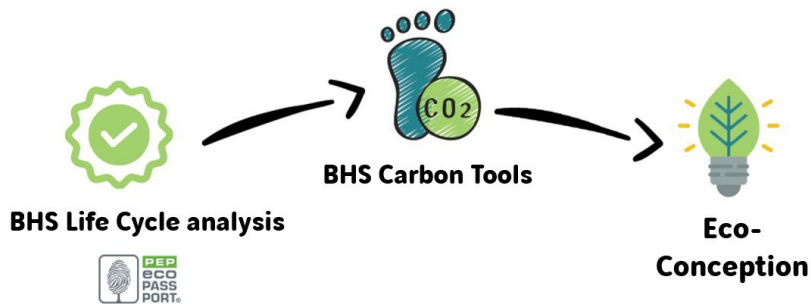
REFERENCES

- ✈ ADP - Aéroports de Paris
- ✈ Vinci Airports – Belgrade Airport
- ✈ AMP - Aéroport de Marseille-Provence
- ✈ Aéroport de Bordeaux-Mérignac
- ✈ DGAC / STAC



TG CONCEPT

From engineering to implementation, we support our customers from the conception to the installation of baggage handling and checkpoint systems by providing low carbon comprehensive solutions



REFERENCES

- ➔ Geneva Airport (Consultant)
- ➔ Toulouse Airport (Consultant)
- ➔ Nice Airport (Consultant)
- ➔ Beirut Airport (Integrator)
- ➔ Rennes Airport (Integrator)
- ➔ Lyon Airport (Integrator)
- ➔ Basel-Mulhouse Airport (Checkpoint)
- ➔ Nantes Airport (Consultant, CheckPoint)

For a smoother passenger journey
Thales is your best partner today and tomorrow.

Discover our full range of solutions & services for Airport
Operation Centres, self-service live passenger
experience, safe and quick baggage screening and
overall airport management.

REFERENCES

- ➔ More than 300 million passengers managed by Thales airport solutions per year
- ➔ Cybersecured by design

World leader in airport operational efficiency & security providing smart airport solutions with major references:

- ➔ John F. Kennedy International Airport, USA
- ➔ Changi Airport, Singapore
- ➔ Dubai International Airport C3, United Arab Emirates
- ➔ Muscat International Airport and Salalah Airport, Oman
- ➔ Bahrain International Airport
- ➔ Doha International Airport, Qatar
- ➔ Lyon Saint-Exupéry Airport, France
- ➔ Charles-de-Gaulle Int. Airport, France
- ➔ King Shaka Int. Airport, Durban, South Africa
- ➔ Barajas International Airport, Madrid, Spain
- ➔ Pisa International Airport, Italy
- ➔ Madeira Funchal Airport, Portugal.



VINCI Airports

World's leading private airport operator, manages the development and operation of more than 50 airports worldwide, with a core focus on performance and environment.

REFERENCES

- ✈ London Gatwick
- ✈ Kansai & Osaka airports
- ✈ Salvador Bahia
- ✈ Lisbon
- ✈ Lyon-Saint Exupéry



#Airportsecurity

#ITSolutions

#PassengerExperience

#Cybersecurity

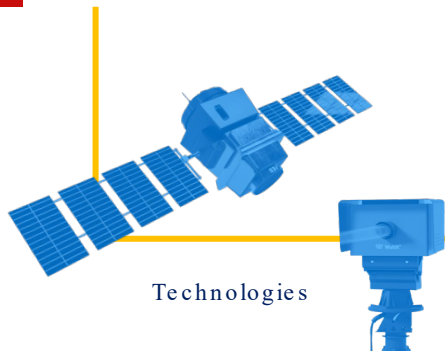
VISIOM – Technology and Service, Our DNA

Global technological security solutions meeting the needs of Air, Sea and Surface Transports, as well as Private and Public Facilities

REFERENCES

- ✈ French regional airports
installation and service of
multiplexed Xray, EDSCB &
EDS Standard 3 integrated
solutions.
- ✈ ONDA – Airports in Morocco
Installation and service of
ProVision 2 body scanner units
and EDS Standard 3 equipments.





REFERENCES



→ 10 years in managing and developing in the fields of atmospheric chemistry and climate

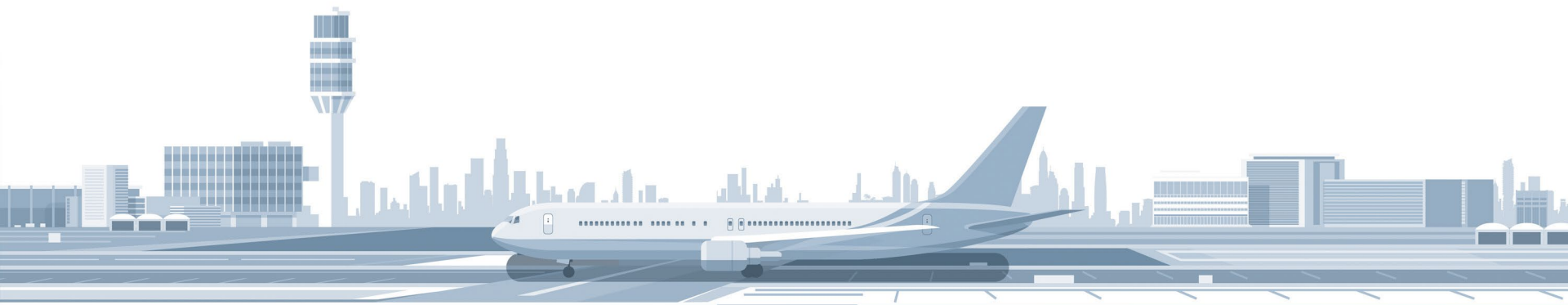
→ 8 PhDs & 16 experts

**WE SEEK EMISSIONS
YOU ACT WHERE IT MATTER**

WALTR

WaltR proposes tracking of pollutant emissions and greenhouse gases using ground and satellite imagery, enabling businesses and organizations to identify and act on actionable opportunities.

more details



Efficient Airports@PROAVIA

Our latest «case studies»



Automated guided vehicles (AGV) designed for baggage handling

BagXone High Speed AGV



The Solution

BAGXONE is a high-speed AGV (Automated Guided Vehicle) designed to handle individual bags.

AGV can cover

short distances

- check-in to screening machines or
- from the screening machines to an Early Bag Store (EBS)
- reconciliation room
- make-up carousel

long distances

(i.e. link between two terminals) and are easily adaptable to suit scalability and redundancy requirements.

**BAGXone**

Benefits

- Easily interfaces to load/unload from BHS
- Speeds of up to 7.5m/s for long distance connections
- Mixed zone speeds of 2m/s
- Capable of horizontal transfer or dynamic transfer from above
- Dynamic unload to chutes
- Opportunity charging to maintain fleet performance



Optimizing stand and gate capacity



The Solution

DELMIA Quintiq interfaces with the central airport operational database (AODB). It is able to automatically update plans with any new information from BAC's various partners.

For example, if updated flight plans for incoming aircraft cause a stand assignment conflict, DELMIA Quintiq resolves it automatically.

Changes to stand the stand and gate plan are immediately communicated back to all relevant partners.

The solution supported planners in coping swiftly and effectively with gate changes by enabling them to:

- Forecast, analyze and prepare for possible change scenarios
- Create flexible plans two days in advance
- Receive immediate alerts of last-minute changes and quickly calculate best responses to minimize delays

to know more



Benefits

- Higher planning efficiency
- Better utilization of the available resources
- More transparency and visibility of aircraft locations during the parking period
- More accuracy in invoicing airline clients for using the stands

TESTIMONIAL ★★★★★

“

“The system is very user friendly and the planning tool is easily and quickly familiarized with.

In addition, it is good to know that the user interface is flexibly and easily modified, allowing each planner to work with his or her own preferences without making the planning any more complicated.”

Tim HERMANS, Resource Optimization Officer at BAC

“Since we have been involved with DELMIA Quintiq, the number of complaints regarding the calculation of parking fees has gone down by 90%. This reduction has also freed up a full-time member of the finance team to concentrate on other issues..”

Roland COPPIN, Head of operational control at BAC

”



Los Angeles Int'l Airport 2019 - 2023

by



LAX INTERNATIONAL AIRPORT Automatic Biometric Boarding Gate



The Solution

EASIER was awarded through a competitive RFP process an ongoing contract to deploy and maintain biometric e-gates connected to the TVS verification system of the CBP, the US border agency, to verify the identity of travelers on outgoing international flights via facial recognition in response to a congressional mandate.

EASIER deployed over 125 Skylane e-Gates throughout the Tom Bradley International Terminal (Terminal B). Passengers can board in 1-step, without having to show boarding pass or passport, with response given in less than 2 seconds. EASIER software connects to the airlines' Departure Control Systems via the common use platform. Over 50 airlines currently use the biometric technology, making LAX the largest deployment of biometric e-gates in the US.



Benefits

- Improved passenger experience, contactless by design
- Faster boarding time – A380s board in 20 minutes
- Improved safety with positive passenger match
- Integrated and tested with most of the world's leading airlines
- Compliant with US Customs



LAWA
LOS ANGELES WORLD AIRPORTS



Lyon Saint-Exupéry Airport 2020

by
and




Mona Biometric journey through a mobile-controlled digital Identity



The Solution

IDEMIA, biometric security solutions, and **RESA**, editor and integrator of I.T. airport systems, have joined forces to supply Lyon Saint-Exupéry airport operator **Vinci Airports** a contactless solution that runs exclusively on passenger biometric data from registration right through to aircraft boarding.

Facial recognition technology coupled with latest-generation automatic gates provides for a smooth, seamless and secure airport experience that factors in social distancing whenever required.



Benefits

- Rapid and safe passenger flow solutions for the airport
- Time saving, safe and contactless solution for the passenger
- Compliant with airport health and safety measures



We are thrilled to launch MONA today, a world first, at a time when airports need game-changing innovations so they can give passengers an even safer, more enjoyable and personalized experience. I warmly congratulate all staff involved including IDEMIA and RESA people, who managed to overcome tough restrictions these last few months and deliver a great trial in barely a year

Valérie Vesque-Jeancard,
Vinci Airports France & Americas Area Director





ABC GATES UPGRADE FOR FRENCH AIRPORTS 2023

by



Automatic Border Control solution Accessible for more international travellers



The Solution

IN Groupe, expert in identity, smart border and traveller experience solutions has worked closely with the French Interior Ministry to upgrade the current ABC gates for Nice, Marseille, Lyon, Bordeaux, Bale-Mulhouse airports with new biometric checks and improve the process for data collection & matching.

Facial recognition, anti-spoofing & unicity detection alert are merged in our solution to offer the smoothest journey to cross the border.



Benefits

- Combination of software and hardware upgrade on existing eGates with a limited impact daily passengers workflow
- From 40 to 93 nationalities eligible to ABC gates
- Secure & fast option to cross the French border in Entry and Exit of the territory



TESTIMONIAL ★★★★★

“

We are very proud of joints efforts done by IN Groupe, the French Air Police and our team to be ready for the kick off of the Rugby World Cup 2023. We improved flow management process and increased the eligibility for our international supporters by enabling them to use automatic border control eGates. A faster process to cross the border and be welcome in Bordeaux.

”

Stéphane LOUNE,
IT Projects Director at Bordeaux Airport





Newcastle International Airport

by



Express Car Park “pay on exit” system



The Solution

Orbitality is the provider of the car park management system for Newcastle International Airport, which includes equipment, the system itself, and a ticketless passenger drop-off solution.

Specific equipment configurations include a successful pay-on-exit solution. Here, customers can pick up and drop off their passengers directly outside the terminal before proceeding to the exit points to make payments using either coins or credit cards. Cameras record vehicle entries and exits through automatic number plate recognition (ANPR), ensuring high accuracy in reading license plates and facilitating a speedy exit from the car park.



Benefits

- Cost-effective and efficiently high levels of reliability and performance
- Simple to integrate into existing airport systems and infrastructures
- Reliable performance, accurate financial reconciliation capabilities, and the resilience of equipment exposed to, at times, severe wintery weather conditions

TESTIMONIAL ★★★★★

A NIAL spokesperson said of the project

“

“Our investment in Orbitality’s car parking solutions has afforded us the ability to offer a range of reliable parking options which our customers demand from us when visiting our airport. Air travel can at times be stressful and we are working hard to mitigate this by offering a positive customer experience which for many starts in our car parks”.

”



Optimize HVAC systems for better control and management

Connected, digitized HVAC equipment

The Solution

The EcoStruxure™ solution building management system (BMS) is now at the heart of Bristol Airport's 24/7 operations.

Connected, digitized HVAC equipment.

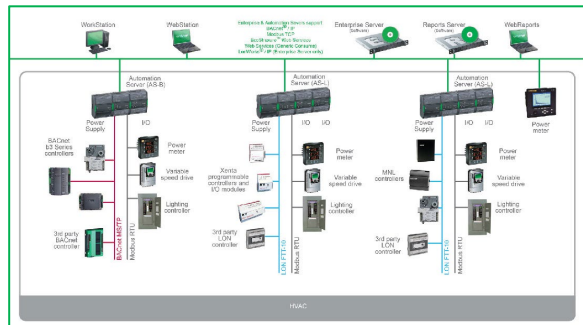
IoT technology, like sensors and metering, provides real-time updates on system performance, enables condition-based monitoring, and uses predictive analytics;

Many airports are a round-the-clock operation and there is no time to shut down HVAC systems for a major repair. They are also high-traffic areas and any operational failure could be unsafe for those in the vicinity.

The data analysis from sensor information takes into account the many factors of heating and cooling a large building with a constantly changing occupancy level.

Airports can use variable speed drives (VSD) to control the speed of pumps and fans, thus only using as much energy as needed.

System integration and remote access give facility personnel anytime/anywhere access to systems, while helping ensure that its all-important energy goals are the priority.



Benefits

- Software is available through web services
- Graphical interfaces and seamless third-party integration
- Perfect to control both from the main terminal building and via smart devices both on- and off-site
- Engineering efficiency improved
- Better control and management of their systems
- Minimized wasted energy, optimized system performance and improved airflow





JFK International Airport, NYC 2023

by



JFK New Terminal - One Microgrid

AlphaStruxure

The Challenge

- Transform NTO into a resilient airport that can function off-grid during power disruptions
- Deliver on aggressive NY State and City sustainability laws
- Deliver energy reliability and resilience with guaranteed system-level uptime
- Produce lower carbon intensity, more efficient, locally generated energy
- Stabilize energy costs over the long-term

The Solution

- Integrated 11.34 megawatt microgrid comprised of 7.66 MW rooftop solar, 3.68 MW fuel cells, 2 MW/4MWh battery energy storage, and a circular waste heat to chilled water system
- Consists of four power islands: each an integrated energy system with sources of generation, storage, and automation
- The AlphaStruxure Integrate digital platform manages the microgrid performance and operations in a cyber-secure environment
- The Energy as a Service business model provides JFK NTO with long-term, predictable operating costs and guaranteed performance without upfront capital expenditures



Benefits



Largest rooftop solar array in New York City

and on any airport terminal in the U.S.
13,000 solar panels cover all viable roof space



38% decrease

in immediate greenhouse gas emissions over source energy



100% airport operations

during power disruptions and the first fully resilient airport transit hub in the New York region



Compliance

with ambitious New York State, City, and Port Authority sustainability mandates



Long-term cost predictability

of energy supply



Greenhouse Gas (GHG) footprint calculator

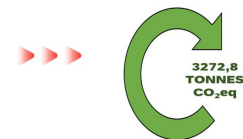
Design-build BHS system



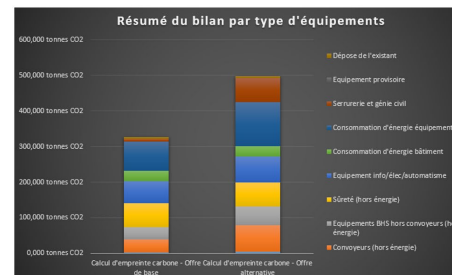
The Solution

This GHG calculator was designed by TG Concept to assess the amount of GHG emissions emitted from a project, from cradle to grave.

- Each stage of the life-cycle of every equipment installed (Production, Distribution, Usage (maintenance and exploitation, including energy consumption), End of life management)
- For each equipment of the system
- Estimation of the impact of project management (travelling, movement on the job site, temporary equipment etc.)
- Based on verified data (Life cycle analysis of a conveyor, vetted by footprint experts)



BASE APPROFONDI	Emprise carbone (tonnes CO2)	ALTERNATIVE APPROFONDI	Emprise carbone (tonnes CO2)	Réduction (en %)	Comparatif empreinte carbone
TOTAL	326,5 tonnes CO2	TOTAL	496,8 tonnes CO2	-52,15%	plus forte



Benefits

- Raise awareness on the impact of the project
- Gives an indicator to compare the impacts of different projects or options
- Helps in choosing the best environmental and technical solution
- Better understanding of the system and its biggest impacts
- Provide keys for continuous improvement, eco-design and energy savings solutions

